

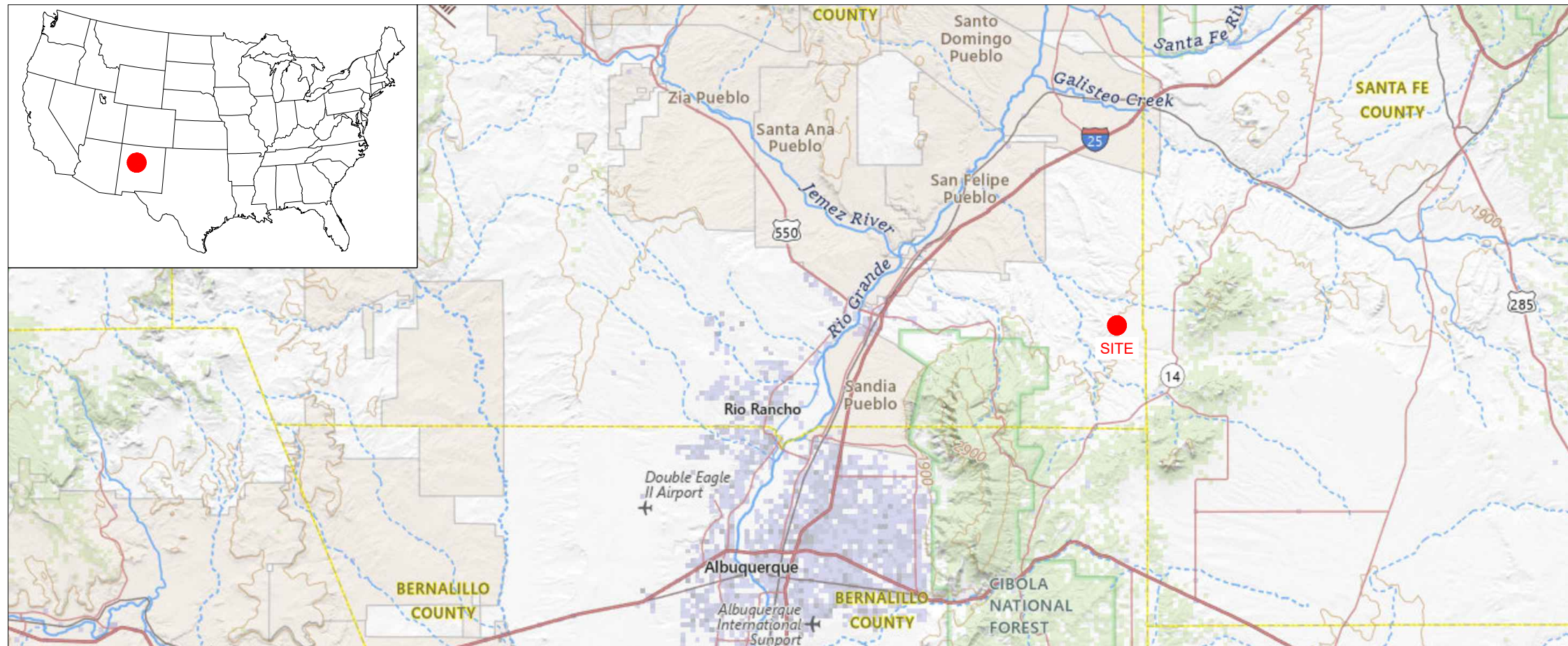
DIAMOND TAIL SOLAR PV + STORAGE PROJECT

DIAMOND TAIL RANCH, SANDOVAL COUNTY, NEW MEXICO

SITE DEVELOPMENT PLAN

Diamond Tail Solar PV + BESS Project

Solar PV						BESS AC Coupled	
MW ac	MW dc	ratio	MWh/y - P50	Capacity factor [%]	Leased Acres	MW ac	MWh
220.00	273.50	1.24	607,578	31.53	1,833	110.50	446.40



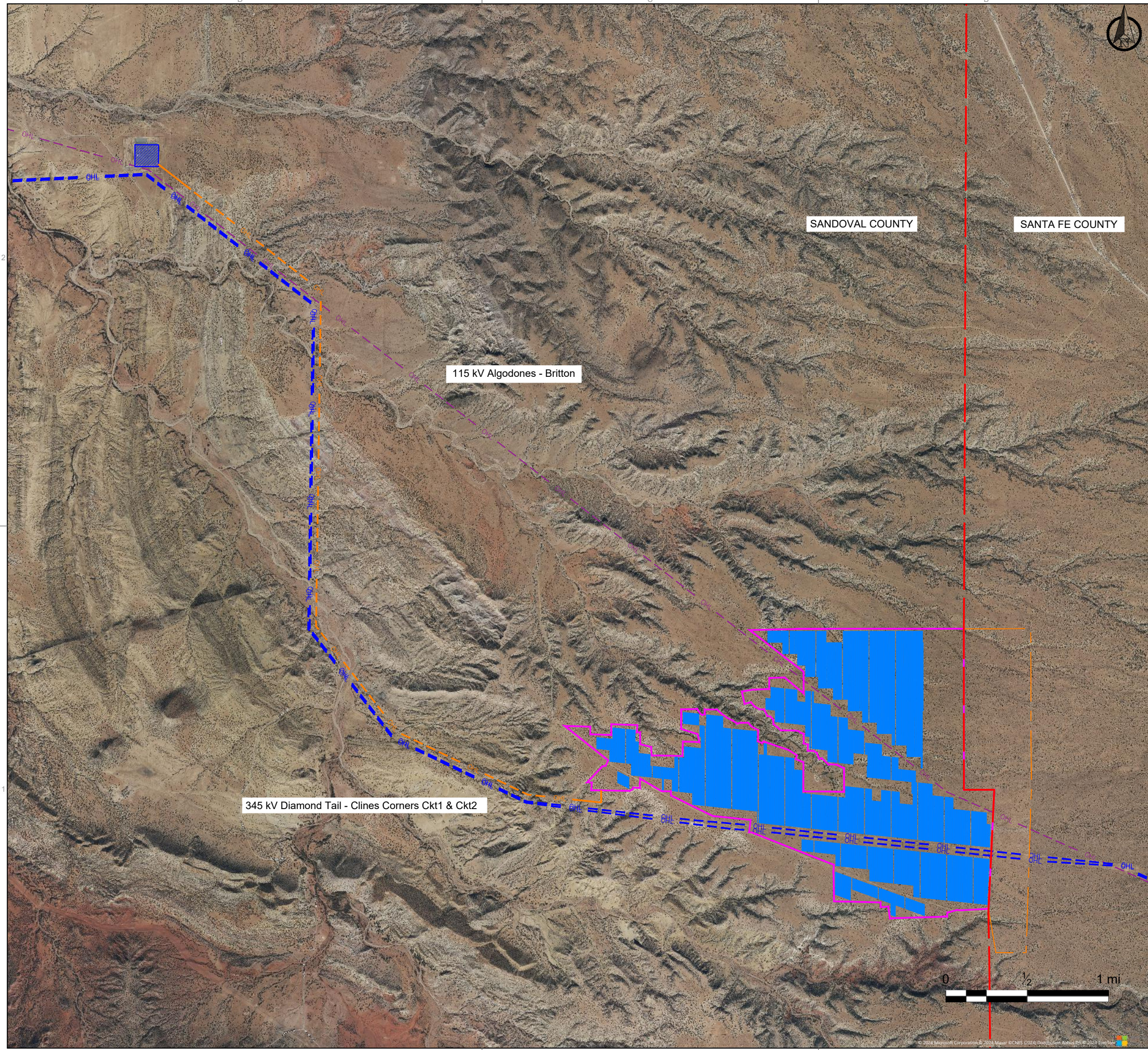
Contact Information

Mariano Brandi	CEO	mbrandi@pcr.energy	PCR US Houston Office (832) 955 1979 - 1334 Brittmoore Rd, Suit 2407 Houston, TX 77043 - www.pcr.energy/en
Cynthia Schuchner	Chief Construction and Engineering Officer	cschuchner@pcr.energy	PCR US Houston Office (832) 955 1979 - 1334 Brittmoore Rd, Suit 2407 Houston, TX 77043 - www.pcr.energy/en

04		
03		
02		
01		
00	08/27/24	Preliminary AC Coupled
Rev.	Date (MM/DD/YY)	COMMENTS

REVISIONS

SITE DEVELOPMENT PLAN		Cover		PCR	
Project:	DIAMOND TAIL SOLAR PV + BESS	Sheet:	01_11		
Sector:	SANDOVAL COUNTY, NM	Scale:			
Owner:	PCR INVESTMENTS SP4 LLC	Rev:			
Utility:	PNM				
File:	Site Development Plan Diamond Tail - AC v12				



- Site Boundaries
- Diamond Tail Ranch located in Santa Fe county; possible future development
- Diamond Tail Substation 345 kV
- Solar PV Arrays
- 115 kV Existing OHL
- 345 kV Existing OHL
- 345 kV OHL Gen-tie
- County Boundary

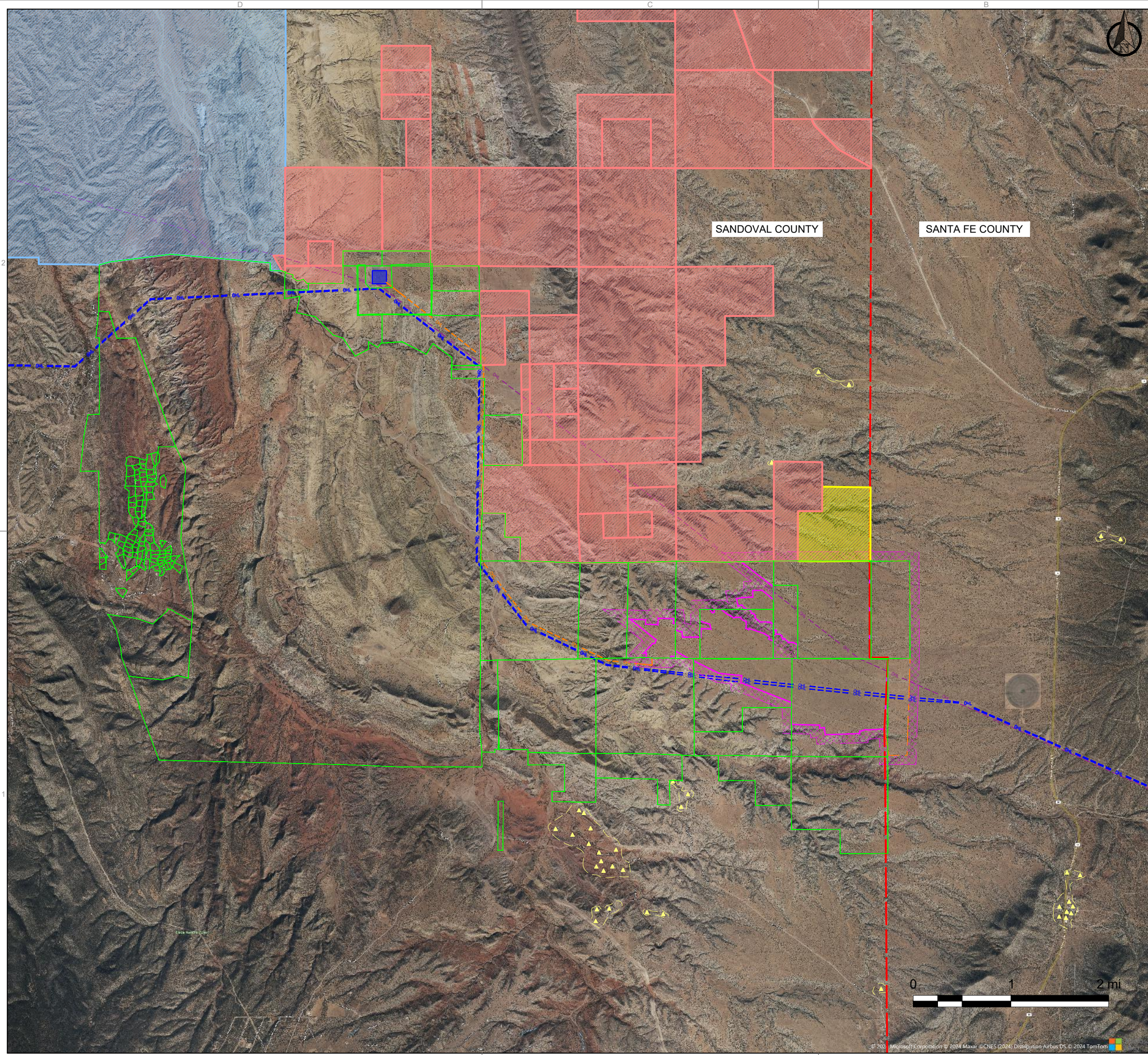
Rev.	Date (MM/DD/YY)	COMMENTS
04		
03		
02		
01		
00	08/27/24	Preliminary AC Coupled

REVISIONS

SITE DEVELOPMENT PLAN

Project Layout & PNM Infrastructure

Project: DIAMOND TAIL SOLAR PV + BESS	Sheet:
Sector: SANDOVAL COUNTY, NM	02_11
Owner: PCR INVESTMENTS SP4 LLC	Scale Rev:
Utility: PNM	1" = 3000'
File: Site Development Plan Diamond Tail - AC v12	



- Site Boundaries
- Diamond Tail Ranch located in Santa Fe county; possible future development
- Diamond Tail Substation 345 kV
- Non - Participating Residences
- 115 kV Existing OHL
- 345 kV Existing OHL
- 345 kV OHL Gen-tie
- County Boundary
- 500 ft Site Boundaries Setback
- Diamond Tail Ranch Parcel
- Pueblo of San Felipe
- United States of America in Trust (Pueblo of San Felipe)
- Castillo Parcel

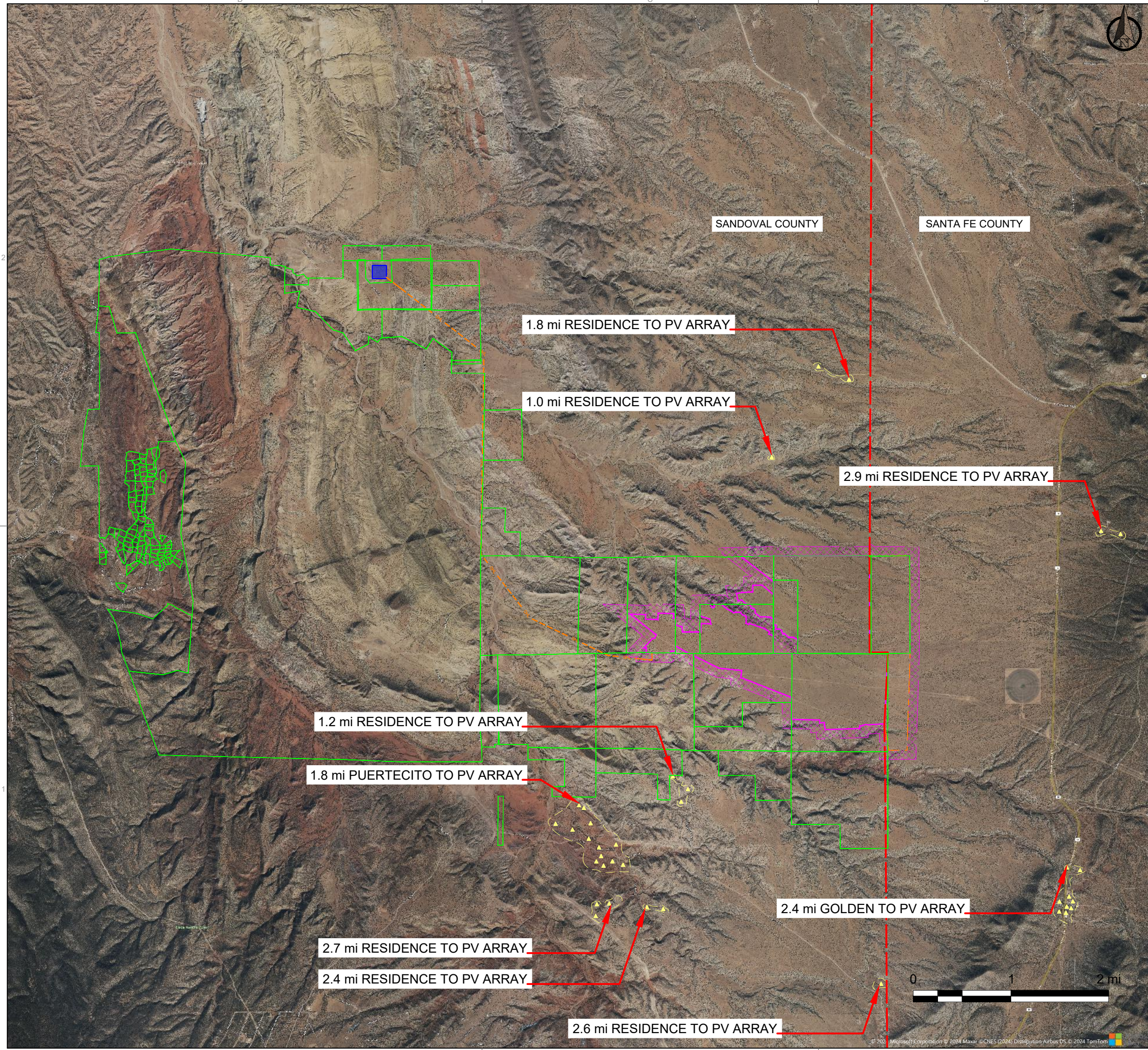
04		
03		
02		
01		
00	08/27/24	Preliminary AC Coupled
Rev.	Date (MM/DD/YY)	COMMENTS
REVISIONS		

SITE DEVELOPMENT PLAN

Project Proximity to Residences

Project: DIAMOND TAIL SOLAR PV + BESS	Sheet:
Sector: SANDOVAL COUNTY, NM	03_11
Owner: PCR INVESTMENTS SP4 LLC	Scale:
Utility: PNM	Rev:
File: Site Development Plan Diamond Tail - AC v12	1" = 5000'





▲ Non - Participating Residences

SANDOVAL COUNTY

SANTA FE COUNTY

1.8 mi RESIDENCE TO PV ARRAY

1.0 mi RESIDENCE TO PV ARRAY

2.9 mi RESIDENCE TO PV ARRAY

1.2 mi RESIDENCE TO PV ARRAY

1.8 mi PUERTECITO TO PV ARRAY

2.4 mi GOLDEN TO PV ARRAY

2.7 mi RESIDENCE TO PV ARRAY

2.4 mi RESIDENCE TO PV ARRAY

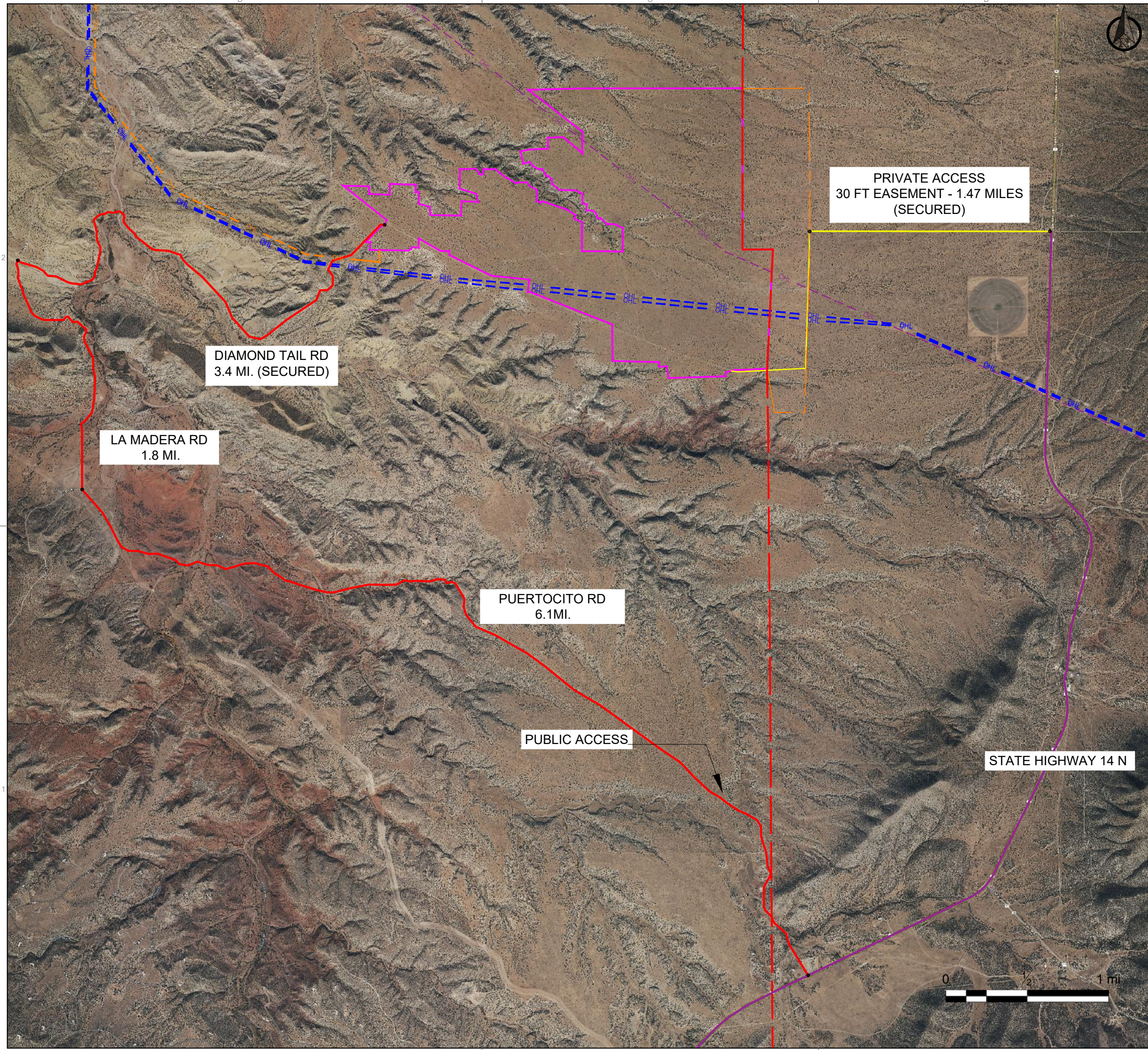
2.6 mi RESIDENCE TO PV ARRAY

Rev.	Date (MM/DD/YY)	COMMENTS
04		
03		
02		
01		
00	08/27/24	Preliminary AC Coupled

REVISIONS

SITE DEVELOPMENT PLAN		
Project Proximity to Residences		
Project:	DIAMOND TAIL SOLAR PV + BESS	Sheet:
Sector:	SANDOVAL COUNTY, NM	04_11
Owner:	PCR INVESTMENTS SP4 LLC	Scale
Utility:	PNM	Rev:
File:	Site Development Plan Diamond Tail - AC v12	1" = 5000'





- Access Route - Construcion & Emergency Only
- Access Route - O&M Only

PRIVATE ACCESS
30 FT EASEMENT - 1.47 MILES
(SECURED)

DIAMOND TAIL RD
3.4 MI. (SECURED)

LA MADERA RD
1.8 MI.

PUERTOCITO RD
6.1 MI.

PUBLIC ACCESS

STATE HIGHWAY 14 N

04		
03		
02		
01		
00	08/27/24	Preliminary AC Coupled
Rev.	Date (MM/DD/YY)	COMMENTS
REVISIONS		

SITE DEVELOPMENT PLAN			
Project Access Routes			
Project:	DIAMOND TAIL SOLAR PV + BESS	Sheet:	05_11
Sector:	SANDOVAL COUNTY, NM	Scale:	1" = 3000'
Owner:	PCR INVESTMENTS SP4 LLC	Rev:	
Utility:	PNM		
File:	Site Development Plan Diamond Tail - AC v12		

115 kV Algodones - Britton

SANDOVAL COUNTY

SANTA FE COUNTY



- Internal Roads
- BESS
- BESS Foundation
- Fence
- Wetland

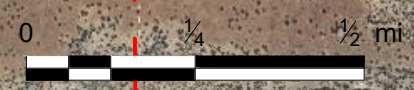
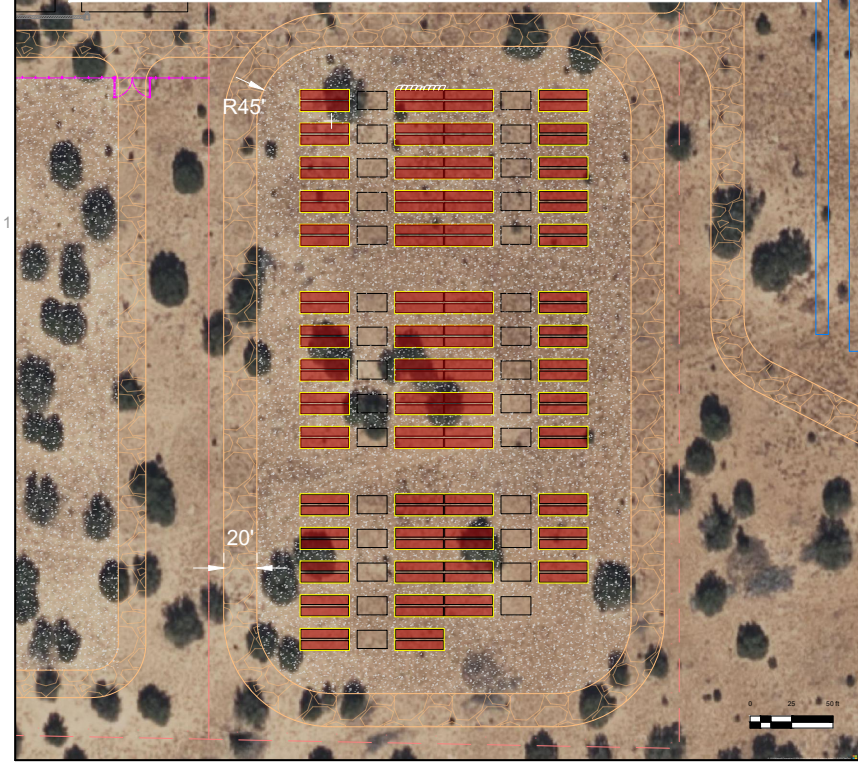
NOTES:

Access and Internal Roads will comply with Sandoval County Fire Apparatus Access Roads standards and with equipment manufacturers transportation and design standards.

BESS	
Brand	Tesla
Model	Megapack
Power Energy	970 kW 3.916 kWh
C-Rate	0.25C
Dimensions (WxDxH)	347" x 65" x 110"
INVERTER	
Brand	Sungrow
Model	SG3600UD-MV-US
Power	3600 kVA @45°C
Output Voltage	34.5 kV
Dimensions (WxHxD)	238.5" x 114.0" x 96.0"
SOLAR PANEL	
Brand	First Solar (or Risen Energy)
Model	FSLR S7 545W (or RSM120-8-595BMDG)
Power	545 Wp - CdTe (or 595 Wp PERC Bifacial)
Dimensions (WxHxD)	1215mm x 2300mm x 49 mm
COMPONENTS	
Total BESS	114
Total Inverters	70
Total Trackers	1V90: 5578
Total Modules	502020
PITCH	20.16 ft
GCR	37.40%

345 kV Diamond Tail - Clines Corners Ckt1 & Ckt2

BESS AC Coupled - 110.5 MW / 446.4 MWh



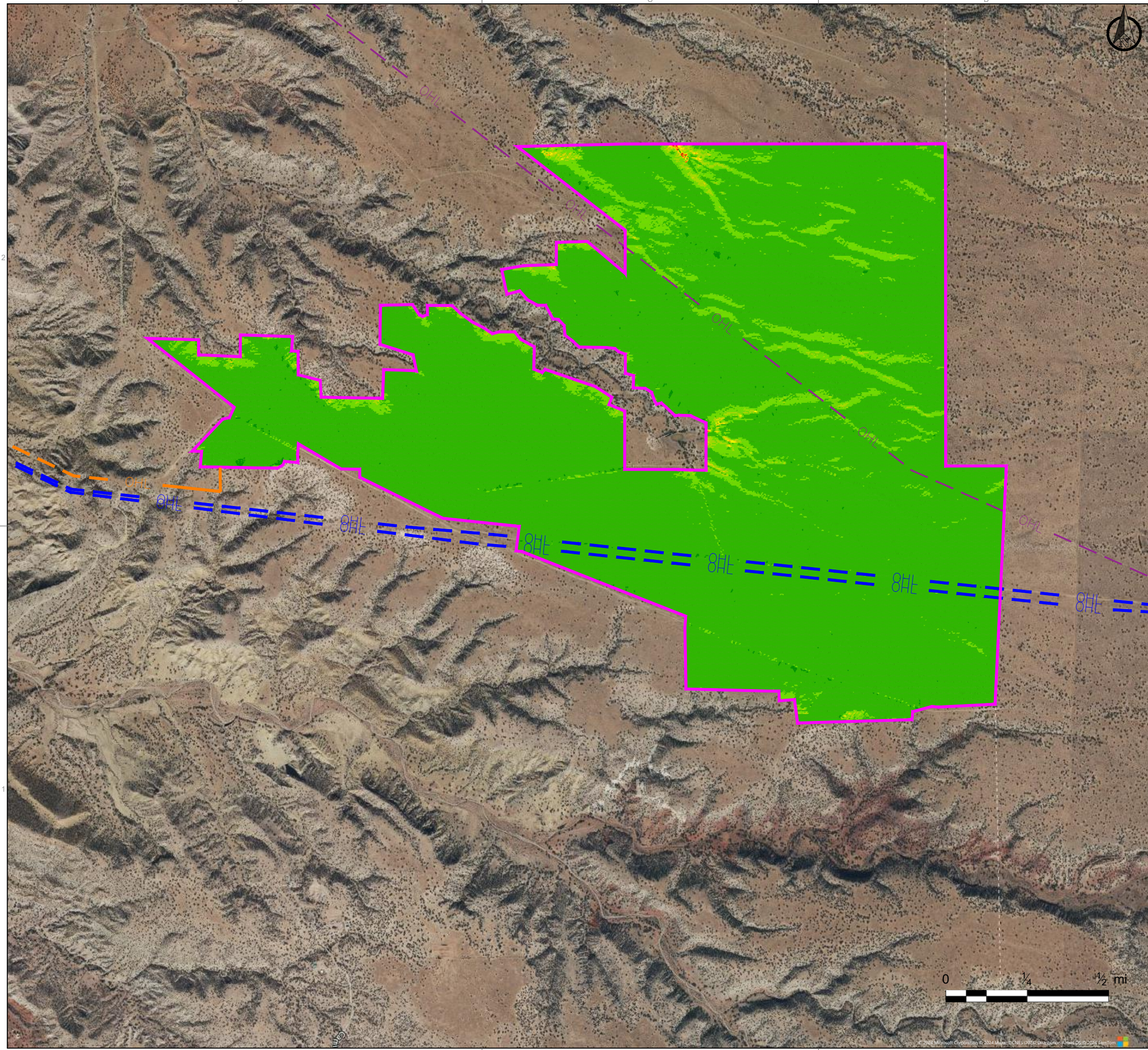
Rev.	Date (MM/DD/YY)	COMMENTS
04		
03		
02		
01		
00	08/27/24	Preliminary AC Coupled

REVISIONS

SITE DEVELOPMENT PLAN
Layout, Internal Roads & BESS

Project: DIAMOND TAIL SOLAR PV + BESS
Sector: SANDOVAL COUNTY, NM
Owner: PCR INVESTMENTS SP4 LLC
Utility: PNM
File: Site Development Plan Diamond Tail - AC v12

Sheet: **06_11**
Scale: 1" = 1500'
Rev:



Angle min., °	Angle max., °	Distribution, %	Color
0.00	0.00	0.28	Dark Green
0.00	1.75	92.33	Light Green
1.75	3.50	6.62	Yellow-Green
3.50	5.25	0.61	Yellow
5.25	7.00	0.10	Light Yellow
7.00	8.75	0.03	Yellow-Orange
8.75	10.50	0.01	Orange
10.50	12.25	0.01	Red-Orange
12.25	14.00	0.00	Red
14.00	55.00	0.00	Dark Red

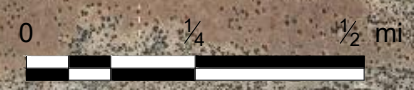
Rev.	Date (MM/DD/YY)	COMMENTS
04		
03		
02		
01		
00	08/27/24	Preliminary AC Coupled

REVISIONS

SITE DEVELOPMENT PLAN

Project Area Slope/Angle

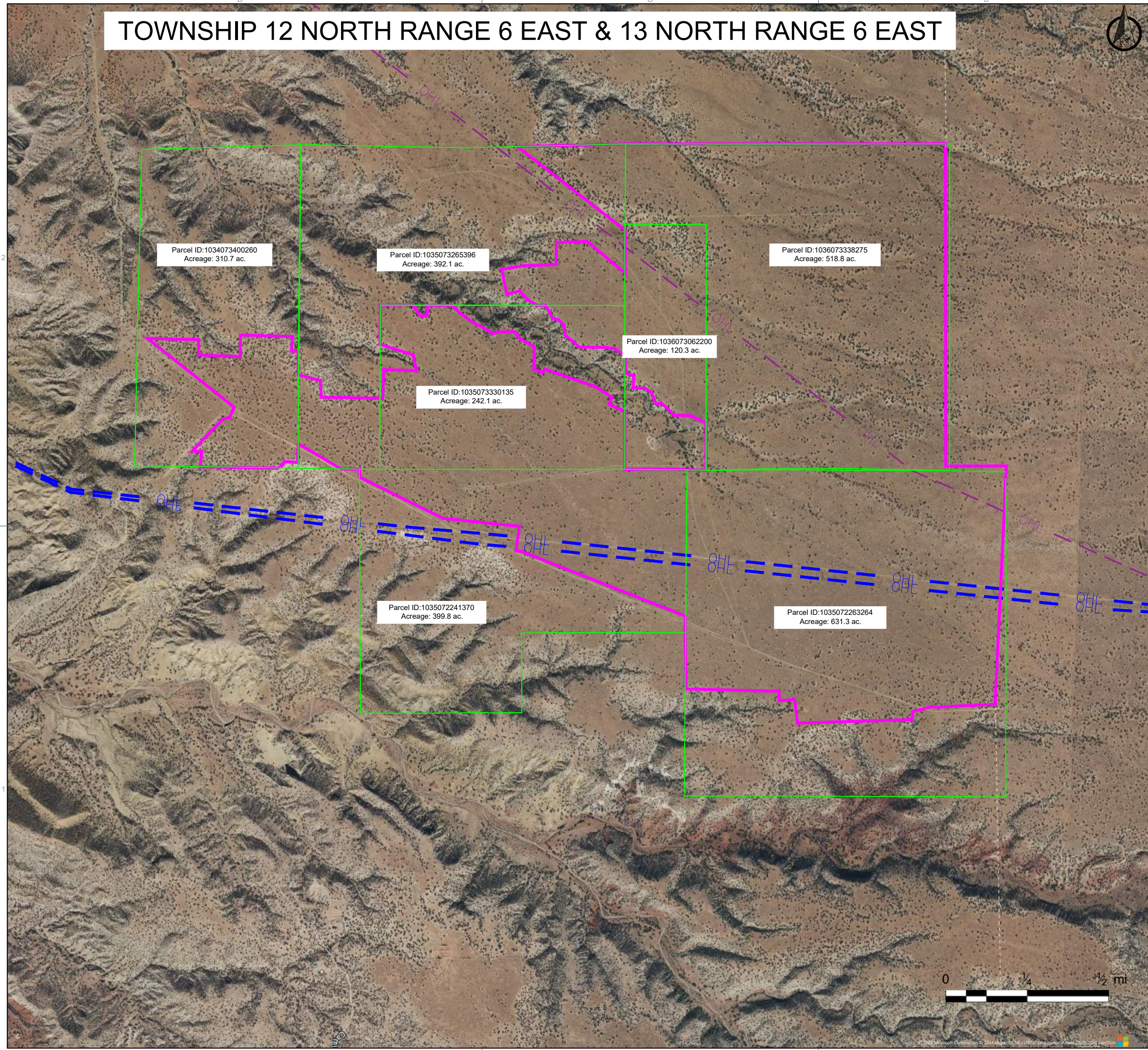
Project: DIAMOND TAIL SOLAR PV + BESS	Sheet: 07_11
Sector: SANDOVAL COUNTY, NM	
Owner: PCR INVESTMENTS SP4 LLC	
Utility: PNM	Scale: 1" = 1500'
File: Site Development Plan Diamond Tail - AC v12	Rev:



TOWNSHIP 12 NORTH RANGE 6 EAST & 13 NORTH RANGE 6 EAST



Parcel



Parcel ID:1034073400260
Acreage: 310.7 ac.

Parcel ID:1035073265396
Acreage: 392.1 ac.

Parcel ID:1036073338275
Acreage: 518.8 ac.

Parcel ID:1036073062200
Acreage: 120.3 ac.

Parcel ID:1035073330135
Acreage: 242.1 ac.

Parcel ID:1035072241370
Acreage: 399.8 ac.

Parcel ID:1035072263264
Acreage: 631.3 ac.

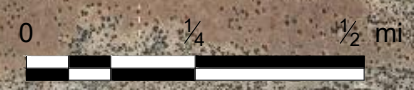
04		
03		
02		
01		
00	08/27/24	Preliminary AC Coupled
Rev.	Date (MM/DD/YY)	COMMENTS

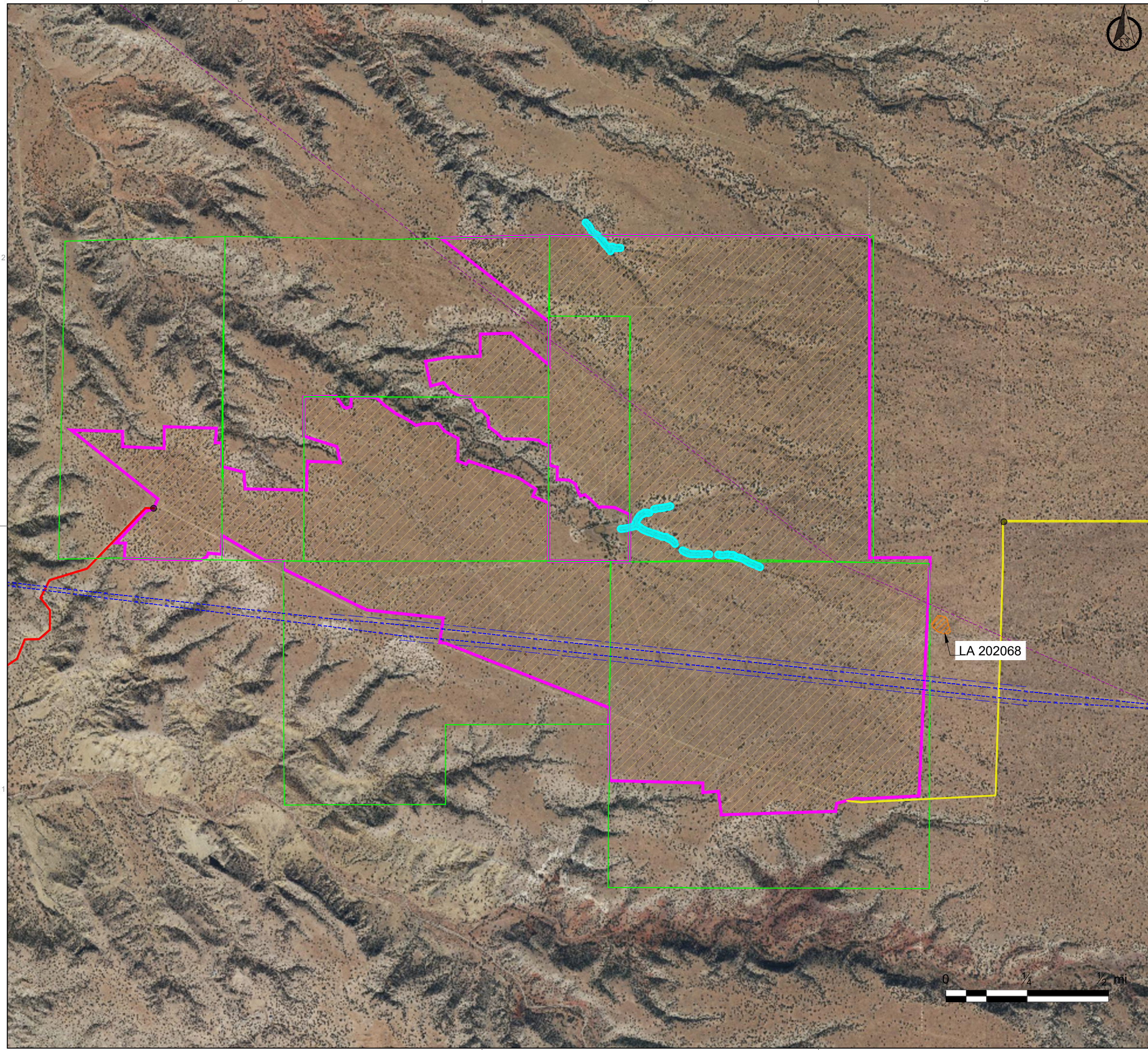
REVISIONS

SITE DEVELOPMENT PLAN

Acreage of Diamond Tail Ranch - Parcels involved in Solar Project

Project:	DIAMOND TAIL SOLAR PV + BESS	Sheet:	08_11
Sector:	SANDOVAL COUNTY, NM	Scale:	1" = 1500'
Owner:	PCR INVESTMENTS SP4 LLC	Rev:	
Utility:	PNM	File:	Site Development Plan Diamond Tail - AC v12





- Access Route - Construcion & Emergency Only
- Access Route - O&M Only
- Proposed Land Disturbance/Panels
- 50 ft Wetland Buffer
- Special Use District (SUD) Parcel
- Archeological Site (LA 202068)

NOTES:

Phase I Environmental Site Assesment(ESA):
 Recognized Environmental Conditions(RECs), Controlled RECs (CRECs) and/or Significant Data Gaps (SDGs) were notidentified in connection with the site.

Class III Cultural Resources Survey Report:
 Avoid Archeological Site (LA 202068) during the construction of the solar array.

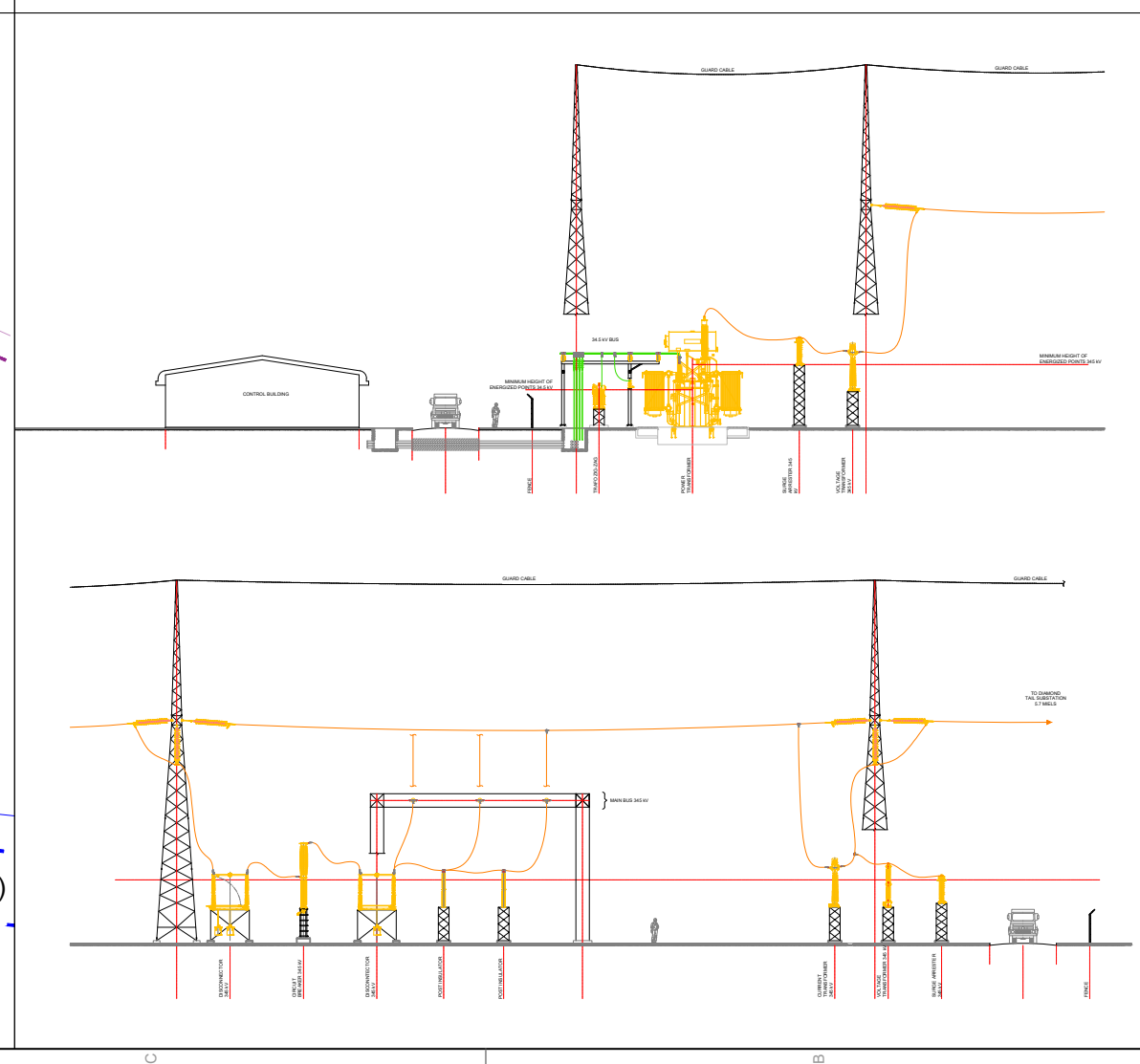
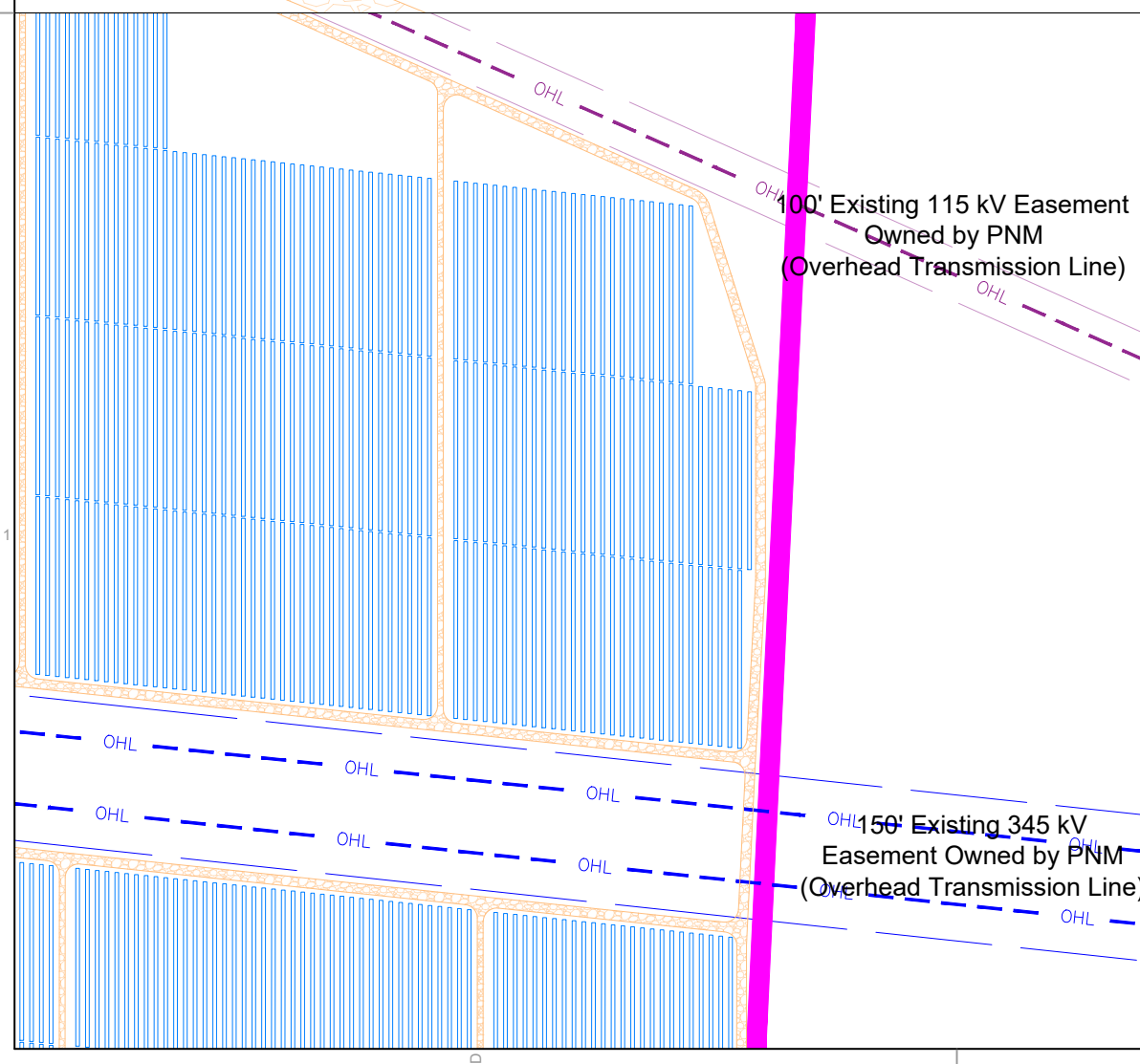
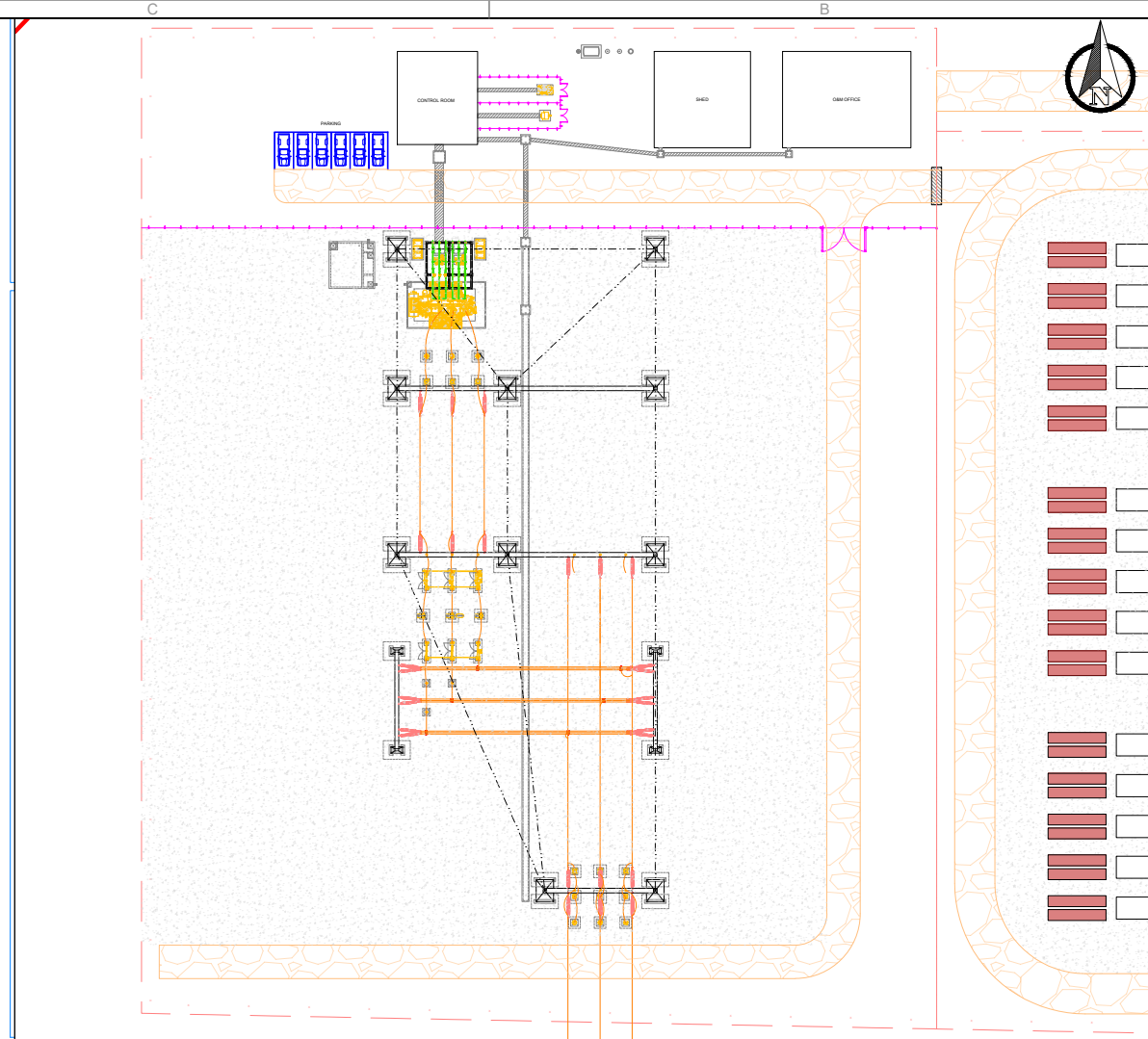
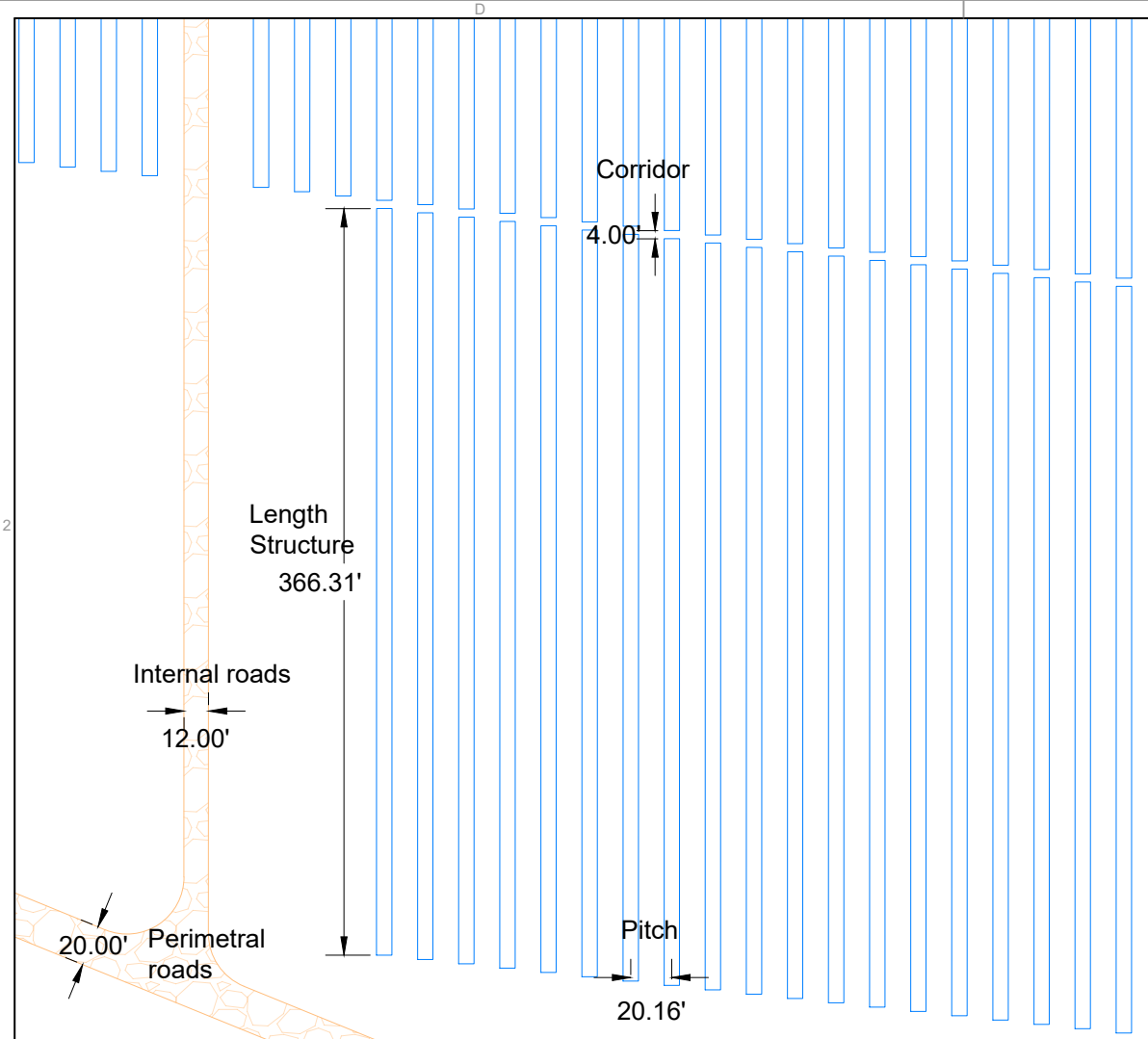
Natural Resource Assesment Report:
 Construction activities should take placeoutside of the nesting season to avoid impacts to the vireo bird.

LA 202068

04		
03		
02		
01		
00	08/27/24	Preliminary AC Coupled
Rev.	Date (MM/DD/YY)	COMMENTS
REVISIONS		

SITE DEVELOPMENT PLAN
Environmental Constraints

Project: DIAMOND TAIL SOLAR PV + BESS	Sheet:
Sector: SANDOVAL COUNTY, NM	09_11
Owner: PCR INVESTMENTS SP4 LLC	
Utility: PNM	Scale Rev:
File: Site Development Plan Diamond Tail - AC v12	1" = 1500'



NOTES:

Dimensions shown are approximate and may change based on final equipment selections.

Max. height typ. 345 kV steel latticetower 85'-110'.

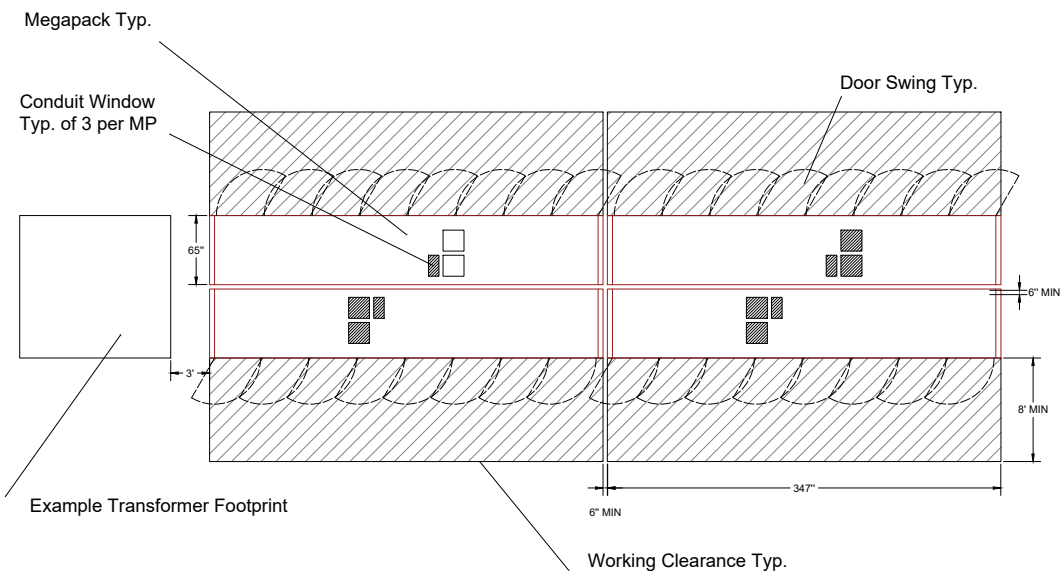
Rev.	Date (MM/DD/YY)	COMMENTS
04		
03		
02		
01		
00	08/27/24	Preliminary AC Coupled

REVISIONS

SITE DEVELOPMENT PLAN
Electrical Design

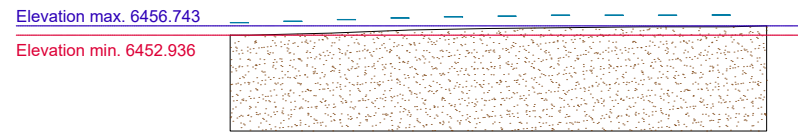
Project:	DIAMOND TAIL SOLAR PV + BESS	Sheet:	10_11
Sector:	SANDOVAL COUNTY, NM	Scale:	
Owner:	PCR INVESTMENTS SP4 LLC	Rev:	
Utility:	PNM		
File:	Site Development Plan Diamond Tail - AC v12		

MEGAPACK 4 HOUR SITE PLAN

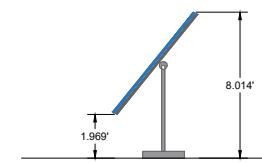
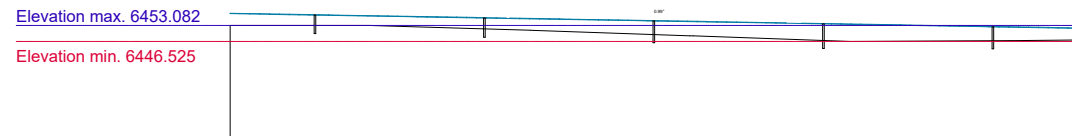


Notes:
1. Max. height Megapack 110"

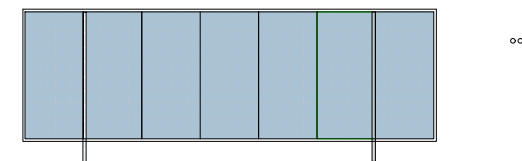
CROSS SECTION VIEW EXAMPLE



FRONT VIEW EXAMPLE



SINGLE AXIS N-S



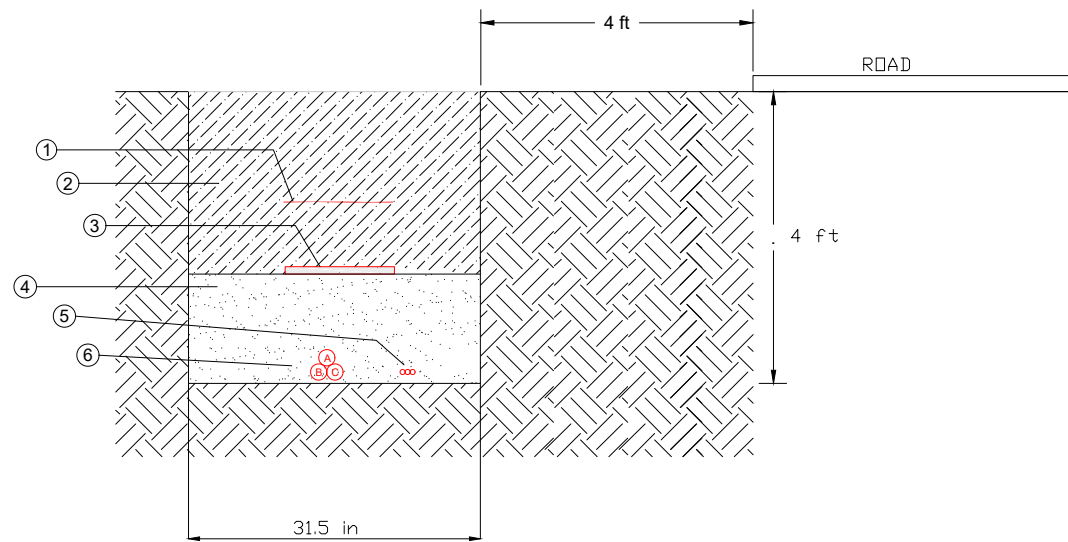
TRACKER 1-PORTRAIT 90 MODULES

NOTES:

Module parameters
Length, ft: 7.546
Width, ft: 3.986
Thickness, ft: 0.161
Power, Wp: 545.000

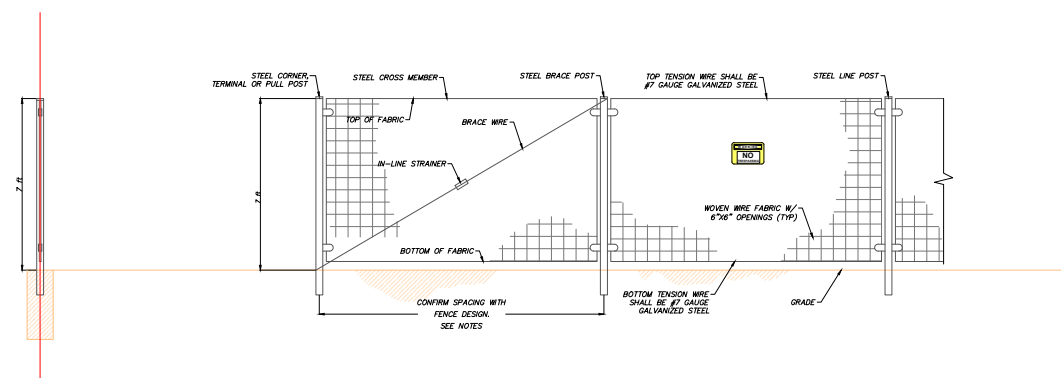
Frame parameters 1V90
Framing type: single-axis trackers
Module orientation: portrait
Rows: 1
Columns: 90
Turning angle range, °: 60.00
Horizontal gap between modules, ft: 0.066
Vertical gap between modules, ft: 0.066
Motor gap size, ft: 6.562
Number of joint gaps : 1
Joint gap size, ft: 1.640
Overhang left, ft: 0.000
Overhang right, ft: 0.000
Pole reveal, ft: 4.942
Reference height, ft: 1.969
Frame height at highest point, ft: 8.014
Frame power, kWp: 49.050

MV UNDERGROUND TRENCH



- ① Warning sign
- ② Filled with excavated land
- ③ Protection plate
- ④ Filled with excavated land
- ⑤ Tribute (FD)
- ⑥ MV 34.5 kV Al 3x300MCM XLPE

SUBSTATION & BESS BOUNDARY FENCE



- NOTES:
- TYPICAL FENCE AND GATE INFORMATION SHOWN IS INTENDED FOR PLANNING PURPOSES. ACTUAL DIMENSIONS AND INFORMATION TO BE PROVIDED BY FENCE SUPPLIER.
 - REFER TO FENCE SUPPLIER SPECIFICATIONS AND DETAILS.
 - STRUCTURAL DESIGN OF FENCE POSTS AND FOUNDATIONS TO BE PROVIDED BY FENCE SUPPLIER.
 - STRUCTURAL PLANS AND FENCE SUPPLIER DRAWINGS SHALL SUPERSEDE THIS DETAIL IF CONFLICTS ARE PRESENT.
 - FENCE AND GATE TYPE TO BE APPROVED BY NEEC PRIOR TO CONSTRUCTION.
 - STEEL LINE POSTS SHALL BE Ø1-7/8" (MIN) MEETING ASTM F1043 GROUP C.
 - STEEL CORNER, TERMINAL, PULL, OR BRACE POSTS SHALL BE Ø2-3/8" (MIN) MEETING ASTM F1043 GROUP C, AND BE BRACED.

04		
03		
02		
01		
00	08/27/24	Preliminary AC Coupled
Rev.	Date (MM/DD/YY)	COMMENTS

REVISIONS

SITE DEVELOPMENT PLAN Electrical Design Details



Project:	DIAMOND TAIL SOLAR PV + BESS	Sheet:	11_11
Sector:	SANDOVAL COUNTY, NM	Scale:	
Owner:	PCR INVESTMENTS SP4 LLC	Rev:	
Utility:	PNM		
File:	Site Development Plan Diamond Tail - AC v12		