

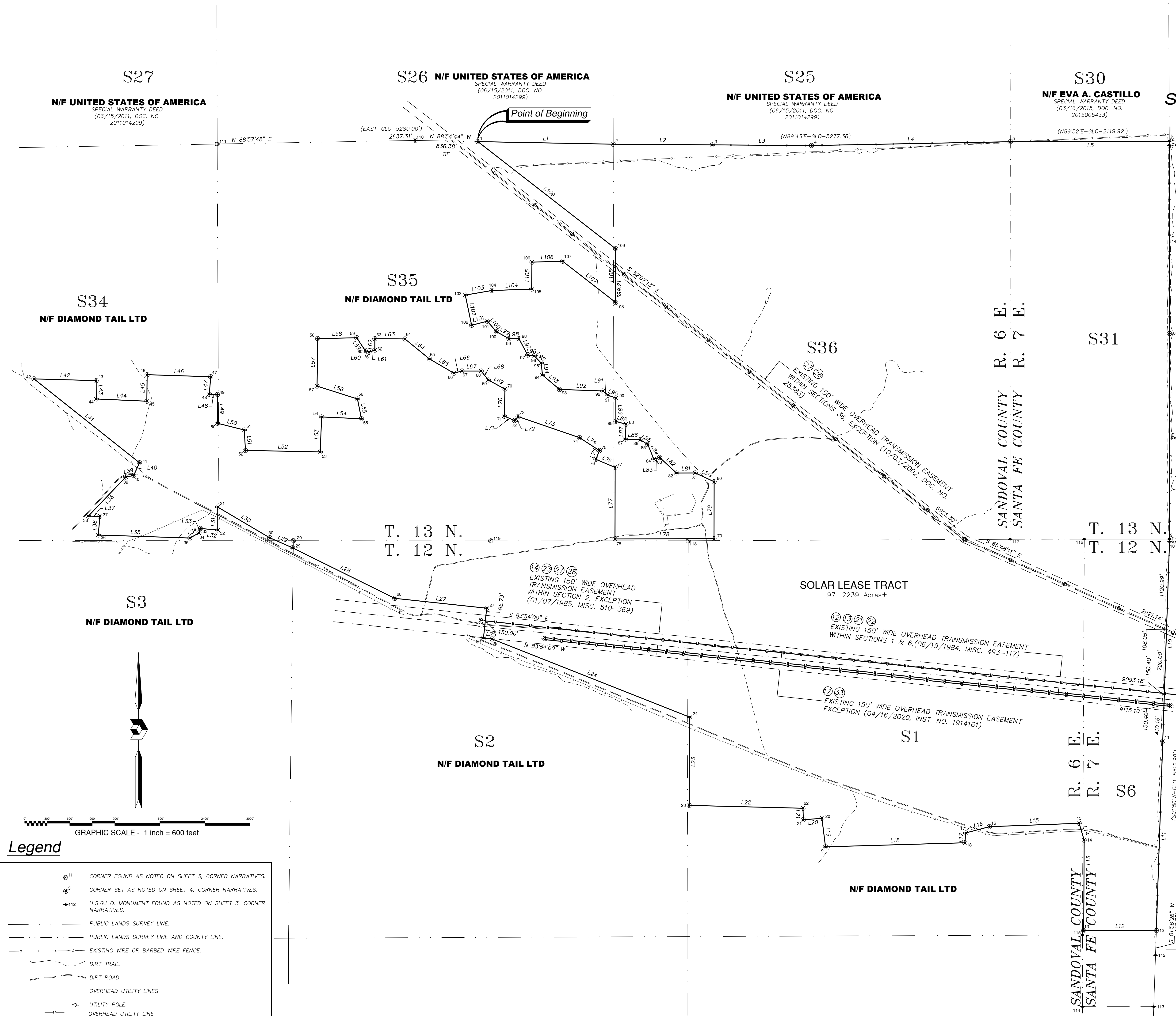
ALT/NSPS Land Title Survey
"Solar Lease Tract"
Within Diamond Tail Ranch
 Vicinity of Golden,
 Sandoval & Santa Fe Counties, New Mexico
 September 2023

ORTIZ MINE GRANT

N/F CONTROL SYSTEMS PROPERTIES LLC
 SPECIAL WARRANTY DEED
 (02/24/2011, INSTRUMENT NO. 1627772)

Line Table

LINE	BEARING	DISTANCE
L1	S 88°54'44" E	1803.68'
L2	S 89°36'48" E	1321.45'
L3	S 89°36'55" E	1321.38'
L4	N 89°54'03" E	2648.22'
L5	N 89°48'22" E	2117.80'
L6	S 00°13'29" E	54.30'
L7	S 00°01'57" E	2510.00'
L8	S 00°01'57" E	2738.74'
L9	S 00°01'53" E	35.67'
L10	S 01°56'26" W	2660.00'
L11	S 01°56'26" W	2925.20'
L12	S 89°55'42" W	966.96'
L13	N 00°14'49" E	1204.94'
L14	N 16°26'23" W	234.41'
L15	S 87°51'41" W	1195.93'
L16	S 75°07'35" W	327.14'
L17	S 05°01'51" W	131.40'
L18	S 89°20'15" W	1857.56'
L19	N 07°10'14" W	382.59'
L20	S 85°43'54" W	249.18'
L21	N 01°30'59" W	133.25'
L22	N 88°34'41" W	1516.31'
L23	N 00°16'41" E	1177.05'
L24	N 68°24'50" W	2830.72'
L25	N 83°54'48" W	114.94'
L26	N 06°07'14" E	400.18'
L27	N 83°52'37" W	1232.28'
L28	N 63°40'18" W	1519.23'
L29	N 66°15'26" W	531.64'
L30	S 59°26'22" W	803.47'
L31	S 00°01'27" W	305.75'
L32	N 64°49'23" W	228.46'
L33	S 20°47'18" W	62.81'
L34	S 60°26'19" W	138.44'
L35	N 88°07'59" W	1222.05'
L36	N 04°44'02" E	249.52'
L37	N 88°29'22" W	153.37'
L38	N 43°42'48" E	718.57'
L39	N 72°57'57" W	249.52'
L40	N 24°25'08" E	184.78'
L41	N 51°29'57" W	1796.19'
L42	S 88°23'48" E	828.72'
L43	S 00°08'58" E	244.35'
L44	S 87°27'43" E	675.71'
L45	N 00°34'00" E	353.59'
L46	S 88°07'33" E	847.71'
L47	S 89°50'18" E	333.90'
L48	S 87°25'45" E	106.99'
L49	S 00°11'26" E	381.65'
L50	S 73°47'01" E	114.94'
L51	S 02°59'27" E	271.52'
L52	S 88°50'12" E	997.59'
L53	N 02°08'29" E	466.46'
L54	S 87°23'17" E	531.98'
L55	N 11°20'50" W	269.24'
L56	N 72°20'56" W	565.78'
L57	N 00°46'44" E	632.45'
L58	N 98°43'11" E	520.39'
L59	S 33°23'41" E	202.45'
L60	S 65°38'03" E	58.34'
L61	N 60°34'53" E	82.45'
L62	N 00°00'15" E	151.86'
L63	S 88°30'55" E	401.06'
L64	S 50°45'55" E	421.71'
L65	S 89°50'18" E	376.58'
L66	N 75°10'56" E	111.87'
L67	S 89°58'47" E	255.11'
L68	S 38°08'57" E	151.76'
L69	S 61°24'10" E	254.29'
L70	S 01°18'45" W	361.61'
L71	S 67°25'01" E	147.62'
L72	N 41°15'08" E	69.91'
L73	S 71°03'02" E	865.38'
L74	S 57°07'48" E	316.45'
L75	S 21°38'31" W	126.50'
L76	S 67°15'41" E	277.08'
L77	S 00°04'56" W	954.01'
L78	N 89°49'22" E	1319.11'
L79	N 00°01'15" E	759.74'
L80	N 65°15'10" W	277.80'
L81	S 89°47'58" W	249.74'
L82	N 47°16'46" W	305.75'
L83	S 74°16'46" W	80.13'
L84	N 22°20'00" W	209.77'
L85	N 57°41'44" W	121.98'
L86	N 89°08'18" W	155.27'
L87	N 02°09'00" E	199.32'
L88	N 74°26'52" W	139.30'
L89	N 00°09'09" W	312.15'
L90	N 70°35'47" W	112.34'
L91	N 50°21'05" W	88.08'
L92	N 87°57'41" W	576.46'
L93	N 43°55'55" W	299.67'
L94	N 04°59'37" W	157.68'
L95	N 43°54'26" W	135.92'
L96	N 84°02'43" W	88.37'
L97	N 27°57'22" W	249.18'
L98	N 89°53'00" W	133.14'
L99	N 61°02'35" W	188.38'
L100	N 47°16'46" W	182.51'
L101	S 72°25'49" W	215.03'
L102	N 11°50'10" W	410.62'
L103	N 80°12'46" E	359.56'
L104	N 87°58'43" E	530.03'
L105	N 00°37'36" E	359.52'
L106	N 88°19'17" E	408.83'
L107	S 52°07'05" E	894.66'
L108	N 00°00'53" E	715.95'
L109	N 52°07'16" W	2325.59'



Legend

- ⊙¹¹¹ CORNER FOUND AS NOTED ON SHEET 3, CORNER NARRATIVES.
- ⊙³ CORNER SET AS NOTED ON SHEET 4, CORNER NARRATIVES.
- ⊙¹¹² U.S.G.L.O. MONUMENT FOUND AS NOTED ON SHEET 3, CORNER NARRATIVES.
- PUBLIC LANDS SURVEY LINE.
- - - PUBLIC LANDS SURVEY LINE AND COUNTY LINE.
- - - - - EXISTING WIRE OR BARBED WIRE FENCE.
- - - - - DIRT TRAIL.
- - - - - DIRT ROAD.
- - - - - OVERHEAD UTILITY LINES
- UTILITY POLE.
- OVERHEAD UTILITY LINE.



PRECISION SURVEYS, INC.
 OFFICE LOCATION:
 9200 San Mateo Boulevard, NE
 Albuquerque, NM 87113
 505.856.5700 PHONE
 505.856.7900 FAX

PROJECT INFORMATION

CREWTECH: WRO	DATE OF SURVEY: 7/24/2023
DRAWN BY: KJS	CHECKED BY: LM
PSI JOB NO. 232090A	SHEET NUMBER 2 OF 4

© Copyright 2023 Precision Surveys, Inc.

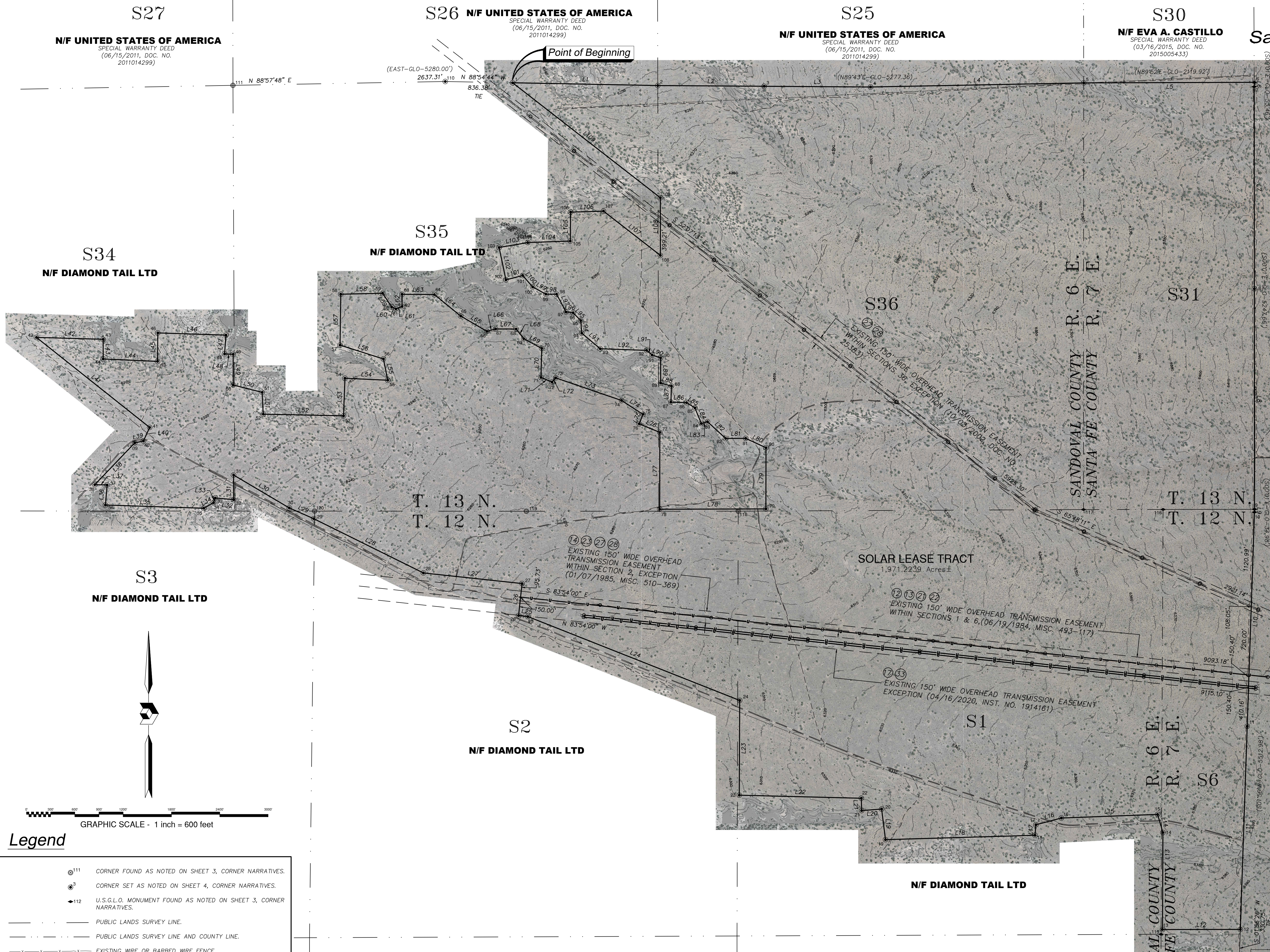
ALT/NSPS Land Title Survey
"Solar Lease Tract"
Within Diamond Tail Ranch
 Vicinity of Golden,
 Sandoval & Santa Fe Counties, New Mexico
 September 2023

**ORTIZ
MINE
GRANT**

**N/F CONTROL SYSTEMS
PROPERTIES LLC**
 SPECIAL WARRANTY DEED
 (02/24/2011, INSTRUMENT NO.
 1627772)

Line Table

LINE	BEARING	DISTANCE
L1	S 88°54'44" E	1803.68'
L2	S 89°36'48" E	1321.45'
L3	S 89°50'59" E	1321.38'
L4	S 89°54'03" E	2648.22'
L5	N 89°48'22" E	2117.80'
L6	S 00°13'29" E	54.30'
L7	S 00°01'57" E	2510.00'
L8	S 00°01'57" E	2738.74'
L9	S 00°01'53" E	35.87'
L10	S 01°56'26" W	2660.00'
L11	S 01°56'26" W	2825.20'
L12	S 89°55'42" W	966.96'
L13	N 00°14'49" E	1204.94'
L14	N 16°26'23" W	234.41'
L15	S 89°20'19" W	1857.56'
L16	S 75°07'35" W	327.14'
L17	S 05°01'59" W	131.40'
L18	S 89°20'19" W	1857.56'
L19	N 07°10'14" W	382.59'
L20	S 85°43'54" W	249.18'
L21	N 01°30'59" W	133.25'
L22	N 88°34'11" W	1516.31'
L23	N 00°16'41" E	1177.05'
L24	N 68°24'50" W	2830.72'
L25	N 83°54'48" W	114.94'
L26	N 06°07'14" E	400.18'
L27	N 83°52'37" W	1232.28'
L28	N 63°40'18" W	1519.23'
L29	N 66°16'19" W	531.64'
L30	S 59°26'22" W	803.47'
L31	S 00°01'27" W	305.75'
L32	N 64°46'23" W	228.46'
L33	S 20°47'18" W	62.81'
L34	S 60°26'19" W	138.44'
L35	N 88°07'59" W	1222.05'
L36	N 04°44'09" E	249.56'
L37	N 88°29'22" W	153.37'
L38	N 43°42'48" E	718.57'
L39	N 77°59'57" W	244.35'
L40	N 24°29'08" E	184.78'
L41	N 51°29'57" W	1796.19'
L42	S 88°23'48" E	828.72'
L43	S 00°06'56" W	244.35'
L44	S 87°27'43" E	675.71'
L45	N 00°34'00" E	353.59'
L46	S 88°07'59" W	847.71'
L47	S 04°29'17" E	333.90'
L48	S 87°25'45" E	106.99'
L49	S 00°11'26" E	381.65'
L50	S 75°44'47" E	369.89'
L51	S 02°59'27" E	271.52'
L52	S 88°50'12" E	997.59'
L53	N 02°08'29" E	466.46'
L54	S 87°23'17" E	531.98'
L55	N 11°20'50" W	269.24'
L56	N 72°20'56" W	565.28'
L57	N 00°04'44" E	632.45'
L58	N 98°43'11" E	520.39'
L59	S 33°23'41" E	202.45'
L60	S 65°38'03" E	58.34'
L61	N 60°35'59" E	82.45'
L62	N 00°00'15" E	151.86'
L63	S 88°30'55" E	401.06'
L64	S 50°45'59" E	421.71'
L65	S 49°50'18" E	376.58'
L66	N 75°10'56" E	111.87'
L67	S 89°58'47" E	255.11'
L68	S 38°08'57" E	151.76'
L69	S 61°24'10" E	254.29'
L70	S 01°18'45" W	361.61'
L71	S 67°25'01" E	147.62'
L72	N 41°18'08" E	69.91'
L73	S 71°03'02" E	865.38'
L74	S 57°07'48" E	316.45'
L75	S 21°38'31" W	126.50'
L76	S 67°15'41" E	277.08'
L77	S 00°04'56" W	954.01'
L78	N 89°49'22" E	1319.11'
L79	N 00°01'15" E	759.74'
L80	N 65°15'10" W	277.80'
L81	S 89°47'58" W	249.74'
L82	N 47°16'46" W	305.75'
L83	S 74°16'46" W	80.13'
L84	N 22°20'00" W	209.77'
L85	N 57°41'44" W	121.98'
L86	N 89°08'18" W	155.27'
L87	N 02°09'00" E	199.32'
L88	N 74°26'52" W	139.30'
L89	N 00°08'09" W	312.15'
L90	N 70°35'44" W	112.34'
L91	N 50°21'05" W	88.08'
L92	N 87°57'41" W	576.46'
L93	N 43°55'55" W	299.67'
L94	N 04°59'37" W	157.68'
L95	N 43°54'26" W	135.92'
L96	N 84°02'43" W	88.37'
L97	N 27°57'22" W	249.18'
L98	N 89°53'00" W	133.14'
L99	N 61°02'35" W	188.38'
L100	N 41°08'48" W	182.27'
L101	S 72°25'49" W	215.51'
L102	N 11°50'10" W	410.62'
L103	N 80°12'46" E	359.56'
L104	N 87°58'43" E	530.03'
L105	N 00°37'36" E	359.52'
L106	N 88°19'17" E	408.83'
L107	S 52°07'05" E	894.66'
L108	N 00°00'53" E	715.95'
L109	N 52°07'16" W	2325.59'



Legend

- ⊙¹¹¹ CORNER FOUND AS NOTED ON SHEET 3, CORNER NARRATIVES.
- ⊙³ CORNER SET AS NOTED ON SHEET 4, CORNER NARRATIVES.
- ⊙¹¹² U.S.G.L.O. MONUMENT FOUND AS NOTED ON SHEET 3, CORNER NARRATIVES.
- PUBLIC LANDS SURVEY LINE.
- PUBLIC LANDS SURVEY LINE AND COUNTY LINE.
- - - EXISTING WIRE OR BARBED WIRE FENCE.
- - - DIRT TRAIL.
- - - DIRT ROAD.
- OVERHEAD UTILITY LINES
- UTILITY POLE.
- OVERHEAD UTILITY LINE.

PRECISION SURVEYS, INC.
 OFFICE LOCATION:
 9200 San Mateo Boulevard, NE
 Albuquerque, NM 87113
 505.856.5700 PHONE
 505.856.7900 FAX

PROJECT INFORMATION

CREW/TECH: WO	DATE OF SURVEY 7/24/2023
DRAWN BY: KJS	CHECKED BY: LM
PSI JOB NO. 232090A	SHEET NUMBER 3 OF 4

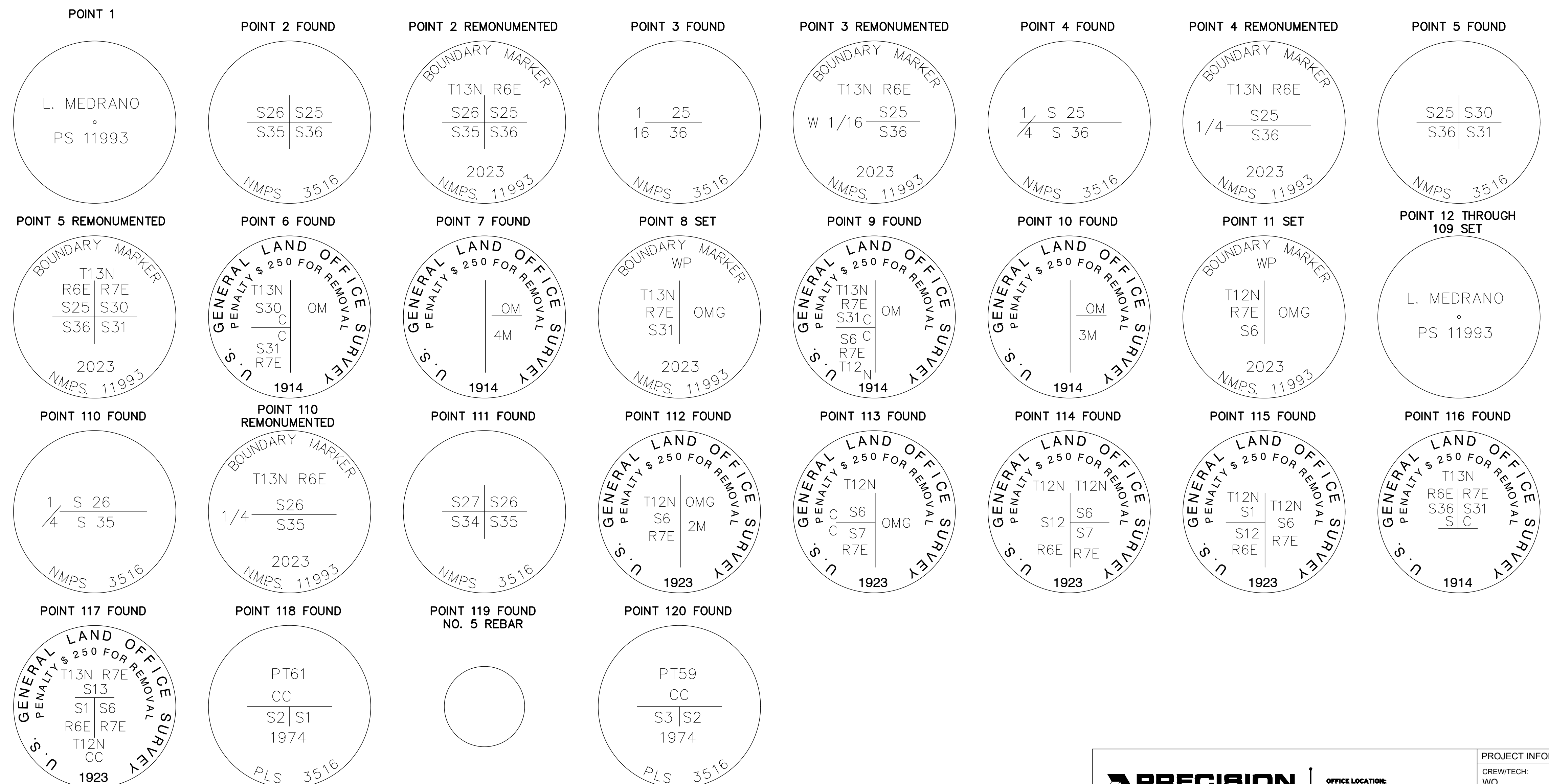
© Copyright 2023 Precision Surveys, Inc.

Corner Narratives

1. SET NO. 5 REBAR WITH PINK PLASTIC CAP STAMPED "PS 11993" AS A CORNER OF THE LEASE BOUNDARY.
2. AT THE COR. OF SECTIONS 25, 26, 35 & 36, ACCEPTED NO. 5 REBAR WITH ALUMINUM CAP AS THE BEST AVAILABLE EVIDENCE OF THE LOCATION OF THE ORIGINAL CORNER. IN PLACE OF THE CAPPED NO. 5 REBAR, SET A 24" LONG FENO ROD WITH BRASS CAP MARKED AS NOTED IN THE CAP DETAILS AND BURIED THE CAPPED REBAR ALONGSIDE.
3. AT THE WEST 1/16 SECTION CORNER OF SECTIONS 25 & 36, ACCEPTED NO. 5 REBAR WITH ALUMINUM CAP AS A CAREFUL AND FAITHFUL DETERMINATION OF THE POSITION OF CORNER. IN PLACE OF THE CAPPED NO. 5 REBAR, SET A 24" LONG FENO ROD WITH BRASS CAP MARKED AS NOTED IN THE CAP DETAILS AND BURIED THE CAPPED REBAR ALONGSIDE.
4. AT THE 1/4 SECTION CORNER OF SECS. 25 & 36, ACCEPTED NO. 5 REBAR WITH ALUMINUM CAP AS THE BEST AVAILABLE EVIDENCE OF THE LOCATION OF THE ORIGINAL CORNER. IN PLACE OF THE CAPPED NO. 5 REBAR, SET A 24" LONG FENO ROD WITH BRASS CAP MARKED AS NOTED IN THE CAP DETAILS AND BURIED THE CAPPED REBAR ALONGSIDE.
5. AT THE CORNER OF SECTIONS 25, 30, 31 & 36, T. 13 N., RS. 6 & 7 E.: ACCEPTED NO. 5 REBAR WITH ALUMINUM CAP AS THE BEST AVAILABLE EVIDENCE OF THE LOCATION OF THE ORIGINAL CORNER. IN PLACE OF THE CAPPED NO. 5 REBAR, SET A 24" LONG FENO ROD WITH BRASS CAP MARKED AS NOTED IN THE CAP DETAILS AND BURIED THE CAPPED REBAR ALONGSIDE. FROM THIS CORNER, A NO. 3 REBAR OF UNKNOWN ORIGIN, BEARS S 80°54'24" E, 4.64 FT. DIST., NOT USED IN THE COURSE OF THIS SURVEY.
6. THE CLOSING CORNER OF SECTIONS 30 & 31, ON THE WEST BOUNDARY OF THE ORTIZ MINE GRANT, T. 13 N., R. 7 E., MONUMENTED WITH AN IRON POST, 2 INS. DIAM., FIRMLY SET, WITH USGLO BRASS CAP MARKED AS NOTED IN THE CAP DETAILS. ALTHOUGH A JUNIOR CORNER ON THE GRANT BOUNDARY, IT HAS BEEN LOCALLY RECOGNIZED AS THE CORNER POINT, AND IS USED TO CONTROL THE GRANT BOUNDARY IN THIS SURVEY. NOT REMONUMENTED.
7. THE 4 MILE CORNER ON THE WEST BOUNDARY OF THE ORTIZ MINE GRANT, MONUMENTED WITH AN IRON POST, 2 INS. DIAM., FIRMLY SET, WITH USGLO BRASS CAP MARKED AS NOTED IN THE CAP DETAILS. NOT REMONUMENTED.
8. AT A POINT SELECTED FOR A WITNESS POINT ON THE 4TH MILE OF THE WEST BOUNDARY OF THE ORTIZ MINE GRANT, SET A 24" LONG FENO ROD WITH BRASS CAP MARKED AS NOTED IN THE CAP DETAILS. REJECTED NO. 3 REBAR OF UNKNOWN ORIGIN FOUND ~94 FEET SOUTH OF THIS POINT, AS ITS PURPOSE IS UNKNOWN AND IN 1914 THE U.S.G.L.O DURING THEIR RESURVEY DID NOT ESTABLISH ANY MONUMENTS IN THIS AREA. THIS MONUMENT WAS NOT TAGGED BY ME.
9. THE CLOSING CORNER OF THE THIRD STANDARD PARALLEL NORTH WITH THE WEST BOUNDARY OF THE ORTIZ MINE GRANT, T. 12 & 13 N., RS. 7 E., MONUMENTED WITH AN IRON POST, 3 INS. DIAM., FIRMLY SET, WITH USGLO BRASS CAP MARKED AS NOTED IN THE CAP DETAILS. ALTHOUGH A JUNIOR CORNER ON THE GRANT BOUNDARY, IT HAS BEEN LOCALLY RECOGNIZED AS THE CORNER POINT, AND IS USED TO CONTROL THE GRANT BOUNDARY IN THIS SURVEY. NOT REMONUMENTED.
10. THE 3 MILE CORNER ON THE WEST BOUNDARY OF THE ORTIZ MINE GRANT, MONUMENTED WITH AN IRON POST, 2 INS. DIAM., FIRMLY SET, WITH USGLO BRASS CAP MARKED AS NOTED IN THE CAP DETAILS. THERE IS NO REMAINING EVIDENCE OF THE ORIGINAL WOOD POST MONUMENT. NOT REMONUMENTED.
11. AT A POINT SELECTED FOR A WITNESS POINT ON THE 3RD MILE OF THE WEST BOUNDARY OF THE ORTIZ MINE GRANT, SET A 24" LONG FENO ROD WITH BRASS CAP MARKED AS NOTED IN THE CAP DETAILS.
12. THROUGH 109. SET NO. 5 REBAR WITH PINK PLASTIC CAP STAMPED "PS 11993" AS A CORNER OF THE LEASE BOUNDARY.
110. AT THE 1/4 SECTION CORNER OF SECTIONS 26 & 35, ACCEPTED NO. 5 REBAR WITH ALUMINUM CAP AS THE BEST AVAILABLE EVIDENCE OF THE LOCATION OF THE ORIGINAL CORNER. IN PLACE OF THE CAPPED NO. 5 REBAR, SET A 24" LONG FENO ROD WITH BRASS CAP MARKED AS NOTED IN THE CAP DETAILS AND BURIED THE CAPPED REBAR ALONGSIDE. FROM THIS CORNER, A NO. 3 REBAR OF UNKNOWN ORIGIN, BEARS S 85°50'11" W, 0.39 FT. DIST., NOT USED IN THE COURSE OF THIS SURVEY.
111. AT THE CORNER OF SECTIONS 26, 27, 34 & 35, ACCEPTED NO. 5 REBAR WITH ALUMINUM CAP MARKED AS NOTED IN THE CAP DETAILS AS THE BEST AVAILABLE EVIDENCE OF THE LOCATION OF THE ORIGINAL CORNER. NOT REMONUMENTED.
112. THE 2 MILE CORNER ON THE WEST BOUNDARY OF THE ORTIZ MINE GRANT, MONUMENTED WITH AN IRON POST, 2 INS. DIAM., FIRMLY SET, WITH USGLO BRASS CAP MARKED AS NOTED IN THE CAP DETAILS. NOT REMONUMENTED.
113. THE CLOSING CORNER OF SECTIONS 6 & 7, ON THE WEST BOUNDARY OF THE ORTIZ MINE GRANT, T. 12 N., R. 7 E., MONUMENTED WITH AN IRON POST, 2 INS. DIAM., FIRMLY SET, WITH USGLO BRASS CAP MARKED AS NOTED IN THE CAP DETAILS. NOT REMONUMENTED. A JUNIOR COR. ON THE GRANT BOUNDARY, USED IN THIS SURVEY ONLY TO DEPICT THE PERIMETER OF SECTION 6.
114. THE CORNER OF SECTIONS 6 & 7 ONLY, T. 12 N., R. 7 E., ON THE EAST BOUNDARY OF T. 12 N., R. 6 E., MONUMENTED WITH AN IRON POST, 2 INS. DIAM., FIRMLY SET, WITH USGLO BRASS CAP MARKED AS NOTED IN THE CAP DETAILS. NOT REMONUMENTED. USED IN THIS SURVEY ONLY TO DEPICT THE PERIMETER OF SECTION 6.
115. THE CORNER OF SECTIONS 1 & 12, T. 12 N., R. 6 E., ON THE EAST BOUNDARY OF T. 12 N., R. 6 E., IDENTICAL WITH CORNER 1 OF MINERAL SURVEY NO. 1214, COLORADO LODE, MONUMENTED WITH AN IRON POST, 2 INS. DIAM., FIRMLY SET, WITH USGLO BRASS CAP MARKED AS NOTED IN THE CAP DETAILS. NOT REMONUMENTED. ALTHOUGH THE CLEARLY MARKED SANDSTONE ALONGSIDE THE IRON POST IS TECHNICALLY THE INTACT ORIGINAL CORNER MONUMENT, THE IRON POST IS ONLY USED IN THIS SURVEY TO DEPICT LINE 1-4 OF THAT MINERAL SURVEY.
116. THE CLOSING CORNER OF T. 12 N., RS. 6 AND 7 E., ON THE THIRD STANDARD PARALLEL NORTH, MONUMENTED WITH AN IRON POST, 3 INS. DIAM., FIRMLY SET, WITH INCORRECTLY MARKED USGLO BRASS CAP AS NOTED IN THE CAP DETAILS. NOT REMONUMENTED. THE IRON POST IS ONLY USED IN THIS SURVEY TO DEPICT THE LINES BETWEEN SECTIONS IN THIS AREA.
117. THE STANDARD CORNER OF T. 13 N., RS. 6 AND 7 E., ON THE THIRD STANDARD PARALLEL NORTH, MONUMENTED WITH AN IRON POST, 3 INS. DIAM., FIRMLY SET, WITH USGLO BRASS CAP MARKED AS NOTED IN THE CAP DETAILS. NOT REMONUMENTED. THE IRON POST IS ONLY USED IN THIS SURVEY TO DEPICT THE LINES BETWEEN SECTIONS IN THIS AREA.
118. AT THE CLOSING CORNER OF SECTIONS 1 & 2, T. 12 N., R. 6 E., ON THE THIRD STANDARD PARALLEL NORTH, ACCEPTED NO. 5 REBAR WITH ALUMINUM CAP MARKED AS NOTED IN THE CAP DETAILS IN AN EMBEDDED MOUND OF STONE AS THE BEST AVAILABLE EVIDENCE OF THE LOCATION OF THE ORIGINAL CORNER. NOT REMONUMENTED. THE CAPPED REBAR IS ONLY USED IN THIS SURVEY TO DEPICT THE LINES BETWEEN SECTIONS IN THIS AREA.
119. AT THE 1/4 SECTION CORNER OF SECTION 2 ONLY, T. 12 N., R. 6 E., ON THE THIRD STANDARD PARALLEL NORTH, ACCEPTED NO. 5 REBAR WITH SANDSTONE ALONGSIDE TO THE NORTH AS THE BEST AVAILABLE EVIDENCE OF THE LOCATION OF THE ORIGINAL CORNER. NOT REMONUMENTED. THE REBAR IS ONLY USED IN THIS SURVEY TO DEPICT THE LINES BETWEEN SECTIONS IN THIS AREA.
120. AT THE CLOSING CORNER OF SECS. 2 & 3, T. 12 N., R. 6 E., ON THE THIRD STANDARD PARALLEL NORTH ACCEPTED NO. 5 REBAR WITH ALUMINUM CAP MARKED AS NOTED IN THE CAP DETAILS WITH LOOSELY SET, MARKED SANDSTONE ALONGSIDE TO THE NORTH. NOT REMONUMENTED. THE CAPPED REBAR IS ONLY USED IN THIS SURVEY TO DEPICT THE LINES BETWEEN SECTIONS IN THIS AREA.

ALTA/NSPS Land Title Survey
"Solar Lease Tract"
within Diamond Tail Ranch
 Vicinity of Golden,
 Sandoval & Santa Fe Counties, New Mexico
 September 2023

Cap Details



	OFFICE LOCATION: 9200 San Mateo Boulevard, NE Albuquerque, NM 87113		PROJECT INFORMATION	
	CREW/TECH: WO	DATE OF SURVEY: 7/24/2023	DRAWN BY: KJS	CHECKED BY: LM
	505.856.5700 PHONE 505.856.7900 FAX		PSI JOB NO. 232090A	SHEET NUMBER 4 OF 4
	© Copyright 2023 Precision Surveys, Inc.			