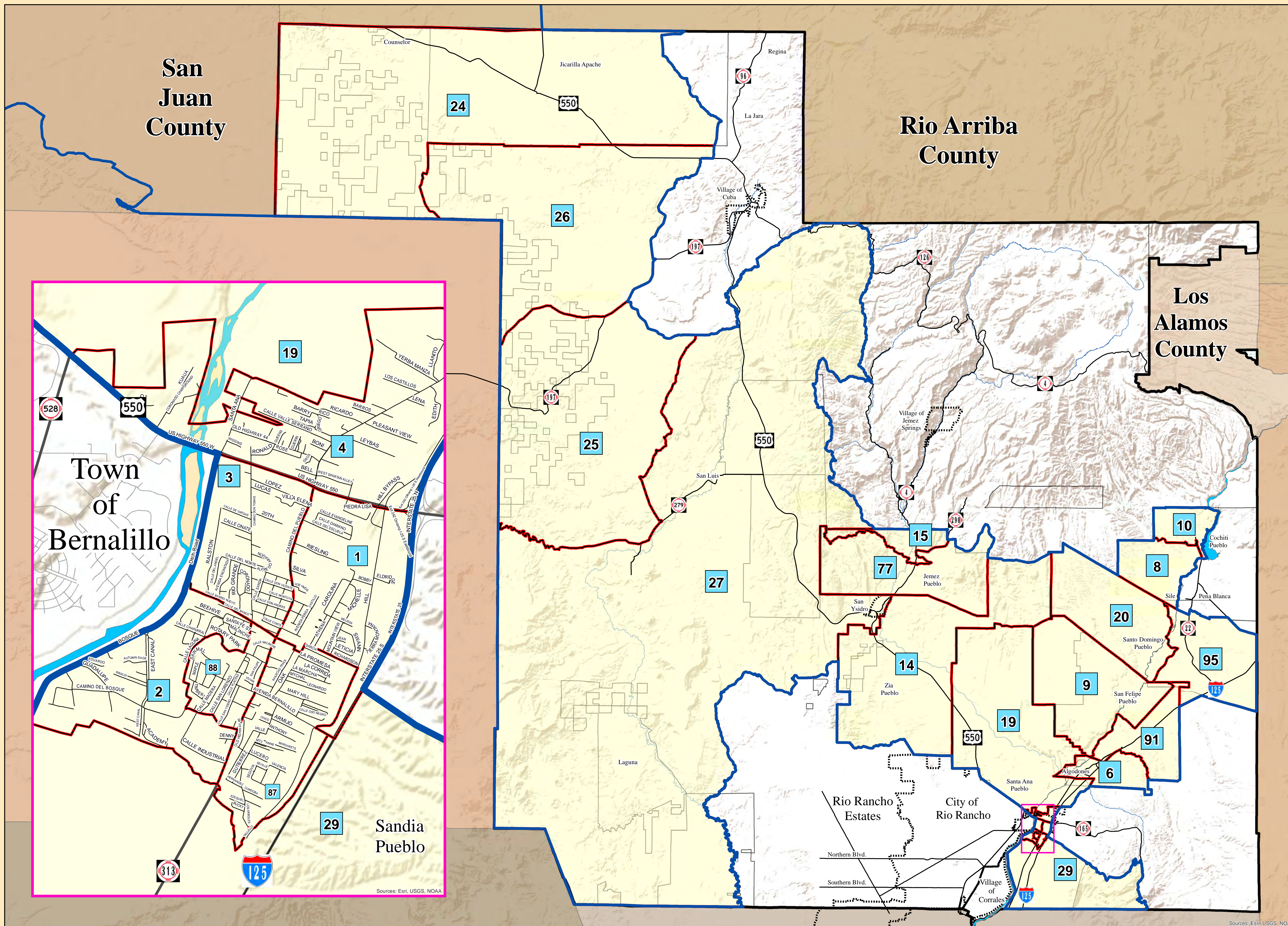




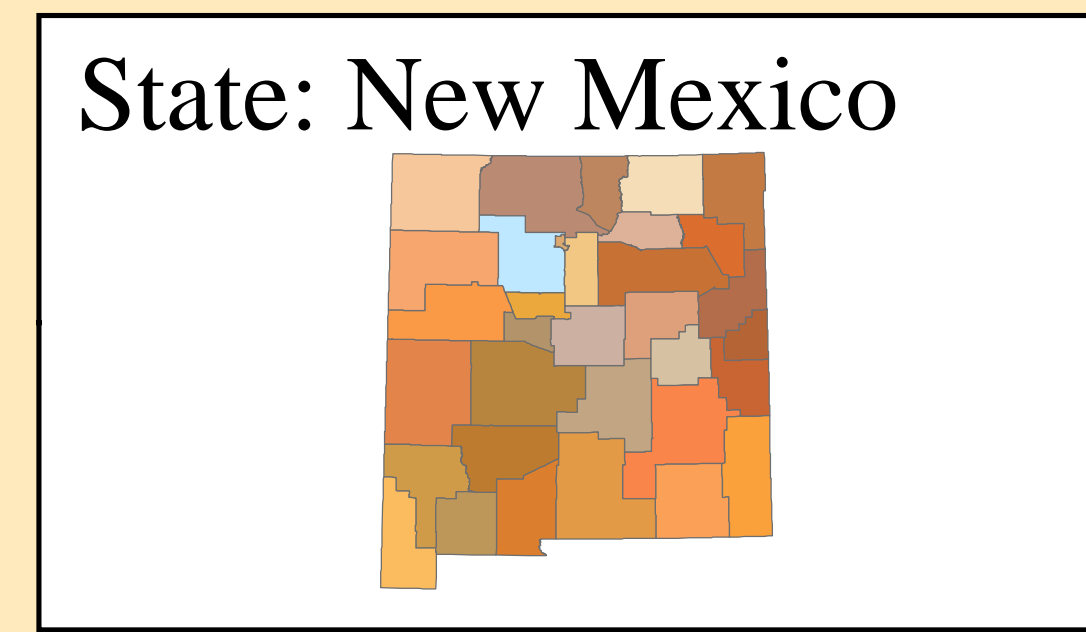
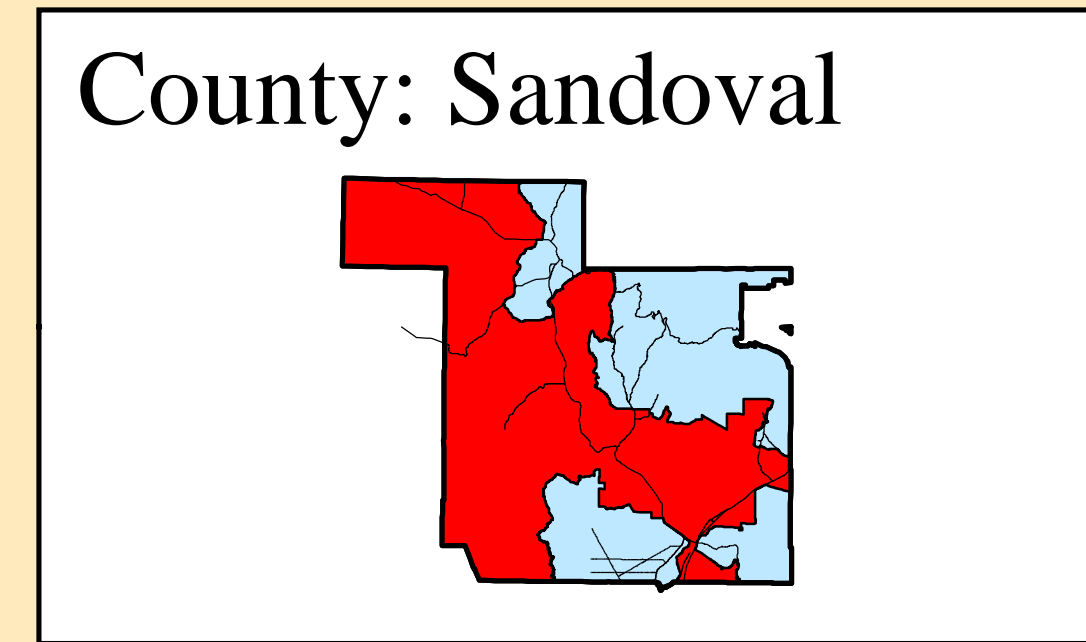
NM State House District 65 Precinct Map-Sandoval County, NM

(2022)



Location:
Town of Bernalillo, Town of San Ysidro
Pueblo of Sandia, Pueblo of Santo Domingo,
Budagers, Pueblo of Santa Ana, San Luis
Pueblo of San Felipe, Torreon Navajo Chapter
Pueblo of Jemez, Ojo Encino Navajo Chapter
Pueblo of Cochiti, Pueblo of Zia

Legend
 NM House District 65 Boundary
 Precinct



**Disclaimer/
Contact Information**
The information on this map is for reference purposes only.
It is a representational map based on GIS data from
the following sources:
Research & Polling, Inc.
www.nmlegis.gov
Please contact the appropriate governmental entity(ies)
for copies of applicable legal property documents
and/or plats for the legal descriptions and boundaries
All information should be independently verified.
Map prepared by:
Jared Massegee -GIS Section
Sandoval County
Planning and Zoning Division
1500 Idalia RD Building D
Bernalillo, New Mexico 87004
Created - February, 2022 Version 1.0